



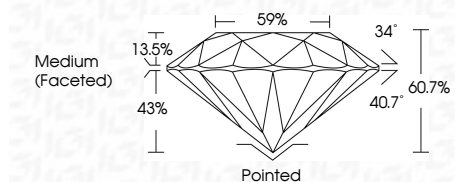
ELECTRONIC COPY

LG651442342 Report verification at igi.org



September 7, 2024 IGI Report Number LG651442342 Description LABORATORY GROWN DIAMOND Shape and Cutting Style ROUND BRILLIANT Measurements 8.17 - 8.20 X 4.97 MM

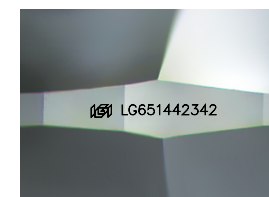
GRADING RESULTS Carat Weight 2.06 CARATS Color Grade D Clarity Grade VS 2 Cut Grade IDEAL



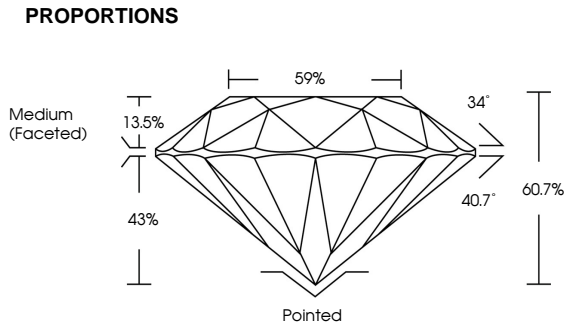
ADDITIONAL GRADING INFORMATION Polish EXCELLENT Symmetry EXCELLENT Fluorescence NONE Inscription(s) IGI LG651442342 Comments: This Laboratory Grown Diamond was created by Chemical Vapor Deposition (CVD) growth process. Type IIa



September 7, 2024 IGI Report No LG651442342 ROUND BRILLIANT 8.17 - 8.20 X 4.97 MM 2.06 CARATS D VS 2 IDEAL 60.7% 59% Medium (Faceted) Pointed EXCELLENT EXCELLENT NONE IGI LG651442342 Comments: This Laboratory Grown Diamond was created by Chemical Vapor Deposition (CVD) growth process. Type IIa



Sample Image Used



COLOR table with categories D, E, F, G, H, I, J, Faint, Very Light, Light

CLARITY table with categories IF, VS 1-2, VS 1-2, SI 1-2, I 1-3, Internally Flawless, Very Very Slightly Included, Very Slightly Included, Slightly Included, Included

