



ELECTRONIC COPY

LABORATORY GROWN DIAMOND REPORT

September 6, 2024
IGI Report Number LG651444048
Description LABORATORY GROWN DIAMOND
Shape and Cutting Style CUT CORNERED RECTANGULAR MODIFIED BRILLIANT
Measurements 12.27 X 8.56 X 5.81 MM

GRADING RESULTS

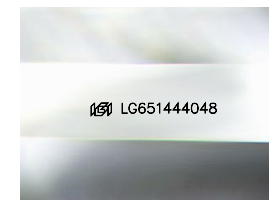
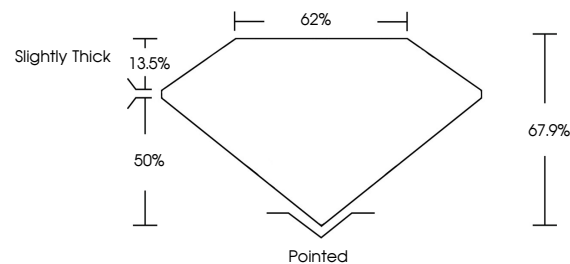
Carat Weight 5.14 CARATS
Color Grade F
Clarity Grade VS 2

ADDITIONAL GRADING INFORMATION

Polish EXCELLENT
Symmetry EXCELLENT
Fluorescence NONE
Inscription(s) LG651444048

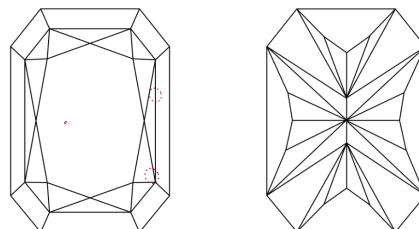
Comments: This Laboratory Grown Diamond was created by Chemical Vapor Deposition (CVD) growth process.
Type IIa

PROPORTIONS



Sample Image Used

CLARITY CHARACTERISTICS



KEY TO SYMBOLS

Red symbols indicate internal characteristics.
Green symbols indicate external characteristics.

COLOR

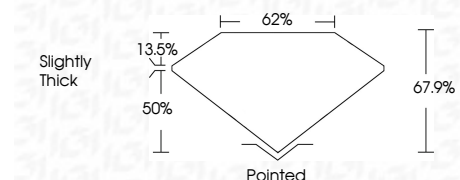
D E F G H I J Faint Very Light Light

CLARITY

IF VS 1-2 VS 1-2 SI 1-2 I 1-3
Internally Flawless Very Very Slightly Included Very Slightly Included Slightly Included Included



September 6, 2024
IGI Report Number LG651444048
Description LABORATORY GROWN DIAMOND
Shape and Cutting Style CUT CORNERED RECTANGULAR MODIFIED BRILLIANT
Measurements 12.27 X 8.56 X 5.81 MM
GRADING RESULTS
Carat Weight 5.14 CARATS
Color Grade F
Clarity Grade VS 2



ADDITIONAL GRADING INFORMATION

Polish EXCELLENT
Symmetry EXCELLENT
Fluorescence NONE
Inscription(s) LG651444048
Comments: This Laboratory Grown Diamond was created by Chemical Vapor Deposition (CVD) growth process.
Type IIa



IGI



September 6, 2024
IGI Report No LG651444048
CUT CORNERED RECT. MODIFIED BRILLIANT
12.27 X 8.56 X 5.81 MM
5.14 CARATS
F
VS 2
67.9%
62%
Slightly Thick
Pointed
EXCELLENT
EXCELLENT
NONE
IGI LG651444048

Comments: This Laboratory Grown Diamond was created by Chemical Vapor Deposition (CVD) growth process.
Type IIa