



**INTERNATIONAL
GEMOLOGICAL
INSTITUTE**

ELECTRONIC COPY

LG651452385



September 10, 2024
IGI Report Number LG651452385
ROUND BRILLIANT
LABORATORY GROWN DIAMOND
4.70 - 4.72 X 2.88 MM
 Carat Weight **0.39 CARAT**
 Color Grade **D**
 Clarity Grade **VVS 1**
 Cut Grade **IDEAL**
 Polish **EXCELLENT**
 Symmetry **EXCELLENT**
 Fluorescence **NONE**
 Inscription(s) **IGI LG651452385**
 Comments: HEARTS & ARROWS This Laboratory Grown Diamond was created by Chemical Vapor Deposition (CVD) growth process. Type Iia

LABORATORY GROWN DIAMOND REPORT

September 10, 2024
 IGI Report Number **LG651452385**
 Description **LABORATORY GROWN DIAMOND**
 Shape and Cutting Style **ROUND BRILLIANT**
 Measurements **4.70 - 4.72 X 2.88 MM**

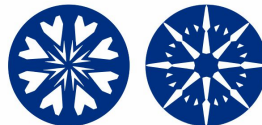
GRADING RESULTS

Carat Weight **0.39 CARAT**
 Color Grade **D**
 Clarity Grade **VVS 1**
 Cut Grade **IDEAL**

ADDITIONAL GRADING INFORMATION

Polish **EXCELLENT**
 Symmetry **EXCELLENT**
 Fluorescence **NONE**
 Inscription(s) **IGI LG651452385**

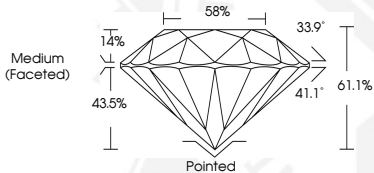
Comments: HEARTS & ARROWS
 This Laboratory Grown Diamond was created by Chemical Vapor Deposition (CVD) growth process.
 Type Iia



HEARTS & ARROWS



Sample Image Used



September 10, 2024
IGI Report Number LG651452385
ROUND BRILLIANT
LABORATORY GROWN DIAMOND
4.70 - 4.72 X 2.88 MM
 Carat Weight **0.39 CARAT**
 Color Grade **D**
 Clarity Grade **VVS 1**
 Cut Grade **IDEAL**
 Polish **EXCELLENT**
 Symmetry **EXCELLENT**
 Fluorescence **NONE**
 Inscription(s) **IGI LG651452385**
 Comments: HEARTS & ARROWS This Laboratory Grown Diamond was created by Chemical Vapor Deposition (CVD) growth process. Type Iia

THIS DOCUMENT WAS PRODUCED WITH THE FOLLOWING SECURITY MEASURES: SPECIAL DOCUMENT PAPER, PINK SCREENS, WATERMARK, BACKGROUND DESIGNS, HOLOGRAM AND OTHER SECURITY FEATURES NOT LISTED AND DO EXCEED DOCUMENT SECURITY INDUSTRY GUIDELINES.

For terms & conditions and to verify this report, please visit www.igi.org