



ELECTRONIC COPY

LG651453227
Report verification at igi.org



September 11, 2024

IGI Report Number **LG651453227**

Description **LABORATORY GROWN DIAMOND**

Shape and Cutting Style **PRINCESS CUT**

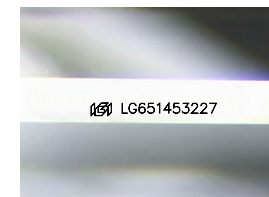
Measurements **7.89 X 7.60 X 5.54 MM**

GRADING RESULTS

Carat Weight **3.05 CARATS**

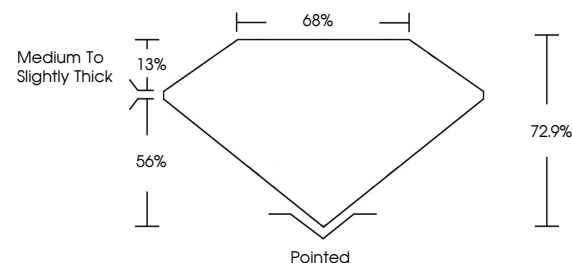
Color Grade **F**

Clarity Grade **VVS 2**

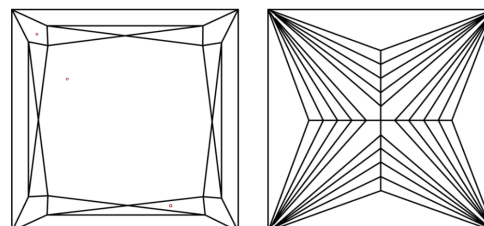


Sample Image Used

PROPORTIONS



CLARITY CHARACTERISTICS



KEY TO SYMBOLS

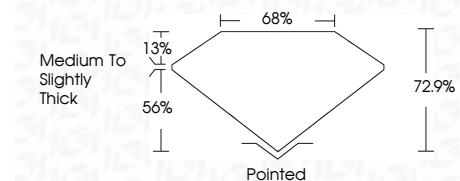
Red symbols indicate internal characteristics.
Green symbols indicate external characteristics.

COLOR

D E F G H I J Faint Very Light Light

CLARITY

IF	VS ¹⁻²	VS ¹⁻²	SI ¹⁻²	I ¹⁻³
Internally Flawless	Very Very Slightly Included	Very Slightly Included	Slightly Included	Included



ADDITIONAL GRADING INFORMATION

Polish **EXCELLENT**

Symmetry **EXCELLENT**

Fluorescence **NONE**

Inscription(s) **IGI LG651453227**

Comments: This Laboratory Grown Diamond was created by Chemical Vapor Deposition (CVD) growth process.
Type IIa



IGI



September 11, 2024
IGI Report No LG651453227
PRINCESS CUT
7.89 X 7.60 X 5.54 MM
3.05 CARATS
F
VVS 2
72.9%
56%
Medium to Slightly Thick
Pointed
EXCELLENT
EXCELLENT
NONE
IGI LG651453227
Comments: This Laboratory Grown Diamond was created by Chemical Vapor Deposition (CVD) growth process.
Type IIa