



ELECTRONIC COPY

LG651453275
Report verification at igi.org



September 10, 2024

IGI Report Number **LG651453275**

Description **LABORATORY GROWN DIAMOND**

Shape and Cutting Style **PRINCESS CUT**

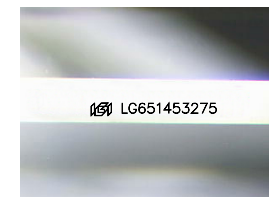
Measurements **7.03 X 6.79 X 5.07 MM**

GRADING RESULTS

Carat Weight **2.21 CARATS**

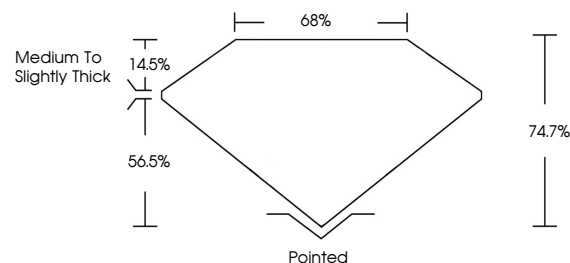
Color Grade **E**

Clarity Grade **VS 1**

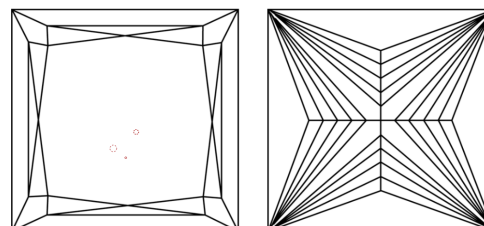


Sample Image Used

PROPORTIONS



CLARITY CHARACTERISTICS



KEY TO SYMBOLS

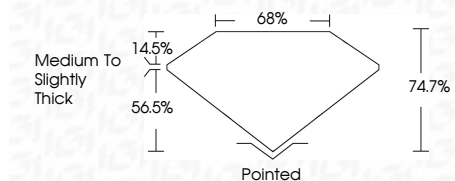
Red symbols indicate internal characteristics.
Green symbols indicate external characteristics.

COLOR

D E F G H I J Faint Very Light Light

CLARITY

IF	VS ¹⁻²	VS ¹⁻²	SI ¹⁻²	I ¹⁻³
Internally Flawless	Very Very Slightly Included	Very Slightly Included	Slightly Included	Included



ADDITIONAL GRADING INFORMATION

Polish **EXCELLENT**

Symmetry **EXCELLENT**

Fluorescence **NONE**

Inscription(s) **IGI LG651453275**

Comments: This Laboratory Grown Diamond was created by Chemical Vapor Deposition (CVD) growth process. Type IIa



IGI



September 10, 2024
IGI Report No. LG651453275
PRINCESS CUT

7.03 X 6.79 X 5.07 MM

2.21 CARATS
E

Color Grade
Depth 74.7%
Table 68%

Medium to Slightly Thick

Pointed
EXCELLENT
EXCELLENT
NONE
IGI LG651453275

Comments: This Laboratory Grown Diamond was created by Chemical Vapor Deposition (CVD) growth process. Type IIa