



ELECTRONIC COPY

LG651465569
Report verification at igi.org



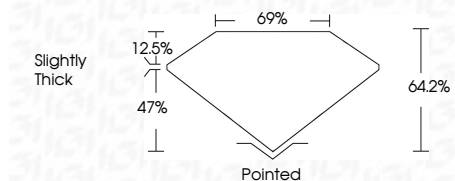
September 10, 2024
IGI Report Number **LG651465569**
Description **LABORATORY GROWN DIAMOND**

Shape and Cutting Style **CUT CORNERED
RECTANGULAR MODIFIED
BRILLIANT**

Measurements **8.09 X 5.75 X 3.69 MM**

GRADING RESULTS

Carat Weight **1.60 CARAT**
Color Grade **FANCY INTENSE YELLOW**
Clarity Grade **VVS 2**

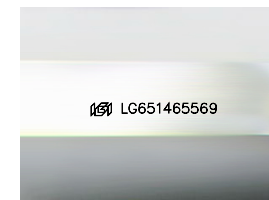


ADDITIONAL GRADING INFORMATION

Polish **EXCELLENT**
Symmetry **EXCELLENT**
Fluorescence **NONE**

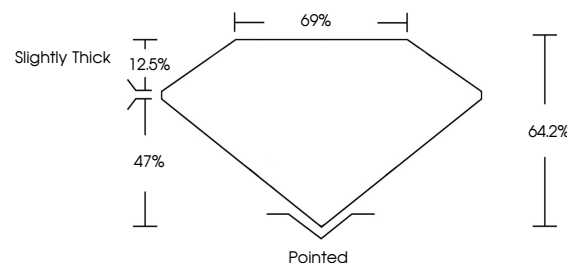
Inscription(s) **IGI LG651465569**

Comments: This Laboratory Grown Diamond was created by Chemical Vapor Deposition (CVD) growth process.

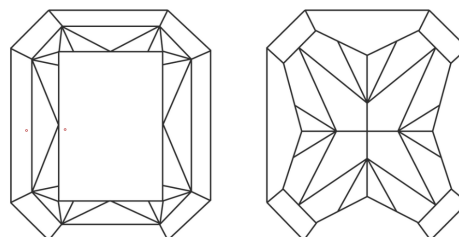


Sample Image Used

PROPORTIONS



CLARITY CHARACTERISTICS



KEY TO SYMBOLS

Red symbols indicate internal characteristics.
Green symbols indicate external characteristics.

COLOR

D E F G H I J Faint Very Light Light

CLARITY

IF VS¹⁻² VS¹⁻² SI¹⁻² I¹⁻³

Internally Flawless Very Very Slightly Included Very Slightly Included Slightly Included Included



September 10, 2024
IGI Report No. LG651465569
CUT CORNERED RECT. MODIFIED BRILLIANT
8.09 X 5.75 X 3.69 MM
1.60 CARAT
FANCY INTENSE YELLOW
VVS 2
64.2%
69%
Slightly Thick
Pointed
EXCELLENT
EXCELLENT
NONE
IGI LG651465569

Comments: This Laboratory Grown Diamond was created by Chemical Vapor Deposition (CVD) growth process.