



ELECTRONIC COPY

LG651465680
Report verification at igi.org



September 11, 2024

IGI Report Number **LG651465680**

Description **LABORATORY GROWN DIAMOND**

Shape and Cutting Style **ROUND BRILLIANT**

Measurements **9.41 - 9.44 X 5.78 MM**

GRADING RESULTS

Carat Weight **3.19 CARATS**

Color Grade **FANCY VIVID BLUE**

Clarity Grade **VVS 2**

Cut Grade **IDEAL**

September 11, 2024
IGI Report Number **LG651465680**
Description **LABORATORY GROWN DIAMOND**
Shape and Cutting Style **ROUND BRILLIANT**
Measurements **9.41 - 9.44 X 5.78 MM**

GRADING RESULTS

Carat Weight **3.19 CARATS**

Color Grade **FANCY VIVID BLUE**

Clarity Grade **VVS 2**

Cut Grade **IDEAL**

ADDITIONAL GRADING INFORMATION

Polish **EXCELLENT**

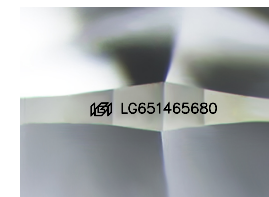
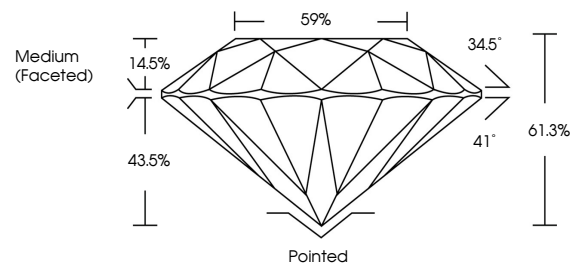
Symmetry **EXCELLENT**

Fluorescence **NONE**

Inscription(s) **LG651465680**

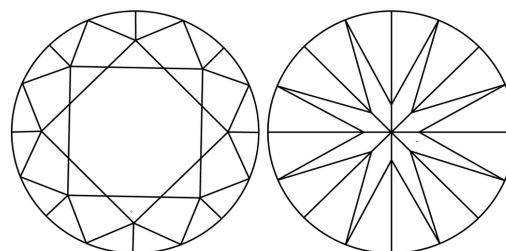
Comments: This Laboratory Grown Diamond was created by Chemical Vapor Deposition (CVD) growth process.
Indications of post-growth treatment.

PROPORTIONS



Sample Image Used

CLARITY CHARACTERISTICS



KEY TO SYMBOLS

Red symbols indicate internal characteristics.
Green symbols indicate external characteristics.

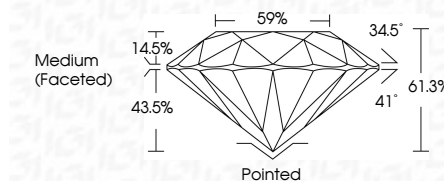
COLOR

D E F G H I J Faint Very Light Light

CLARITY

IF VS¹⁻² VS¹⁻² SI¹⁻² I¹⁻³

Internally Flawless Very Very Slightly Included Very Slightly Included Slightly Included Included



ADDITIONAL GRADING INFORMATION

Polish **EXCELLENT**

Symmetry **EXCELLENT**

Fluorescence **NONE**

Inscription(s) **LG651465680**

Comments: This Laboratory Grown Diamond was created by Chemical Vapor Deposition (CVD) growth process.
Indications of post-growth treatment.



IGI



| | | | | | | | | | | | | | |
|--------------------|---------------------------|--------------|------------------|---------------|-----------|-------|-------|------------------|---------|-----------|-----------|--------------|----------------|
| September 11, 2024 | IGI Report No LG651465680 | 3.19 CARATS | FANCY VIVID BLUE | VVS 2 | IDEAL | 61.3% | 59% | Medium (Faceted) | Pointed | EXCELLENT | EXCELLENT | NONE | LG651465680 |
| ROUND BRILLIANT | 9.41 - 9.44 X 5.78 MM | Carat Weight | Color Grade | Clarity Grade | Cut Grade | Depth | Table | Girdle | Culet | Polish | Symmetry | Fluorescence | Inscription(s) |

Comments: This Laboratory Grown Diamond was created by Chemical Vapor Deposition (CVD) growth process.
Indications of post-growth treatment.