



ELECTRONIC COPY

LG651466106
Report verification at igi.org



September 18, 2024
IGI Report Number **LG651466106**
Description **LABORATORY GROWN DIAMOND**
Shape and Cutting Style **SQUARE CUSHION MODIFIED
BRILLIANT**

Measurements **11.21 X 11.07 X 7.11 MM**

GRADING RESULTS

Carat Weight **8.09 CARATS**
Color Grade **FANCY VIVID GREEN**
Clarity Grade **VS 2**

September 18, 2024
IGI Report Number **LG651466106**
Description **LABORATORY GROWN DIAMOND**
Shape and Cutting Style **SQUARE CUSHION MODIFIED
BRILLIANT**
Measurements **11.21 X 11.07 X 7.11 MM**

GRADING RESULTS

Carat Weight **8.09 CARATS**
Color Grade **FANCY VIVID GREEN**
Clarity Grade **VS 2**

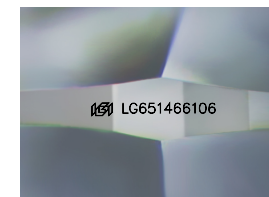
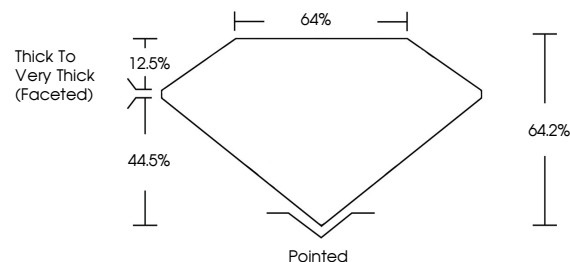
ADDITIONAL GRADING INFORMATION

Polish **EXCELLENT**
Symmetry **EXCELLENT**
Fluorescence **NONE**
Inscription(s) **IGI LG651466106**

Comments: This Laboratory Grown Diamond was created by Chemical Vapor Deposition (CVD) growth process.
Indications of post-growth treatment.

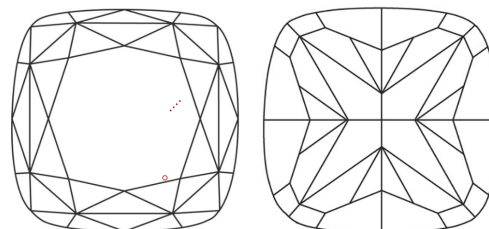
Secondary color: Grey

PROPORTIONS



Sample Image Used

CLARITY CHARACTERISTICS



KEY TO SYMBOLS

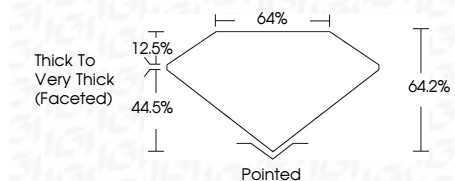
Red symbols indicate internal characteristics.
Green symbols indicate external characteristics.

COLOR

D E F G H I J Faint Very Light Light

CLARITY

IF	VS ¹⁻²	VS ¹⁻²	SI ¹⁻²	I ¹⁻³
Internally Flawless	Very Very Slightly Included	Very Slightly Included	Slightly Included	Included



ADDITIONAL GRADING INFORMATION

Polish **EXCELLENT**
Symmetry **EXCELLENT**
Fluorescence **NONE**
Inscription(s) **IGI LG651466106**

Comments: This Laboratory Grown Diamond was created by Chemical Vapor Deposition (CVD) growth process.
Indications of post-growth treatment.

Secondary color: Grey



IGI



September 18, 2024
IGI Report No LG651466106
SQUARE CUSHION MODIFIED BRILLIANT
11.21 X 11.07 X 7.11 MM
8.09 CARATS
FANCY VIVID GREEN
VS 2
64.2%
44.5%
12.5%
Thick to Very Thick (Faceted)
Pointed
EXCELLENT
EXCELLENT
NONE
IGI LG651466106
Comments: This Laboratory Grown Diamond was created by Chemical Vapor Deposition (CVD) growth process.
Indications of post-growth treatment.
Secondary color: Grey