



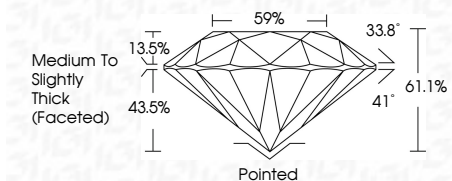
ELECTRONIC COPY

LG651472147 Report verification at igi.org



September 11, 2024 IGI Report Number LG651472147 Description LABORATORY GROWN DIAMOND Shape and Cutting Style ROUND BRILLIANT Measurements 7.43 - 7.46 X 4.55 MM

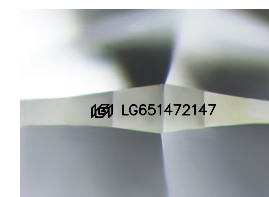
GRADING RESULTS Carat Weight 1.56 CARAT Color Grade E Clarity Grade VS 1 Cut Grade IDEAL



ADDITIONAL GRADING INFORMATION Polish EXCELLENT Symmetry EXCELLENT Fluorescence NONE Inscription(s) IGI LG651472147 Comments: This Laboratory Grown Diamond was created by Chemical Vapor Deposition (CVD) growth process. Type IIa



September 11, 2024 IGI Report No LG651472147 ROUND BRILLIANT 7.43 - 7.46 X 4.55 MM 1.56 CARAT E VS 1 IDEAL 61.1% 59% Medium To Slightly Thick (Faceted) Pointed EXCELLENT EXCELLENT NONE IGI LG651472147 Comments: This Laboratory Grown Diamond was created by Chemical Vapor Deposition (CVD) growth process. Type IIa



Sample Image Used

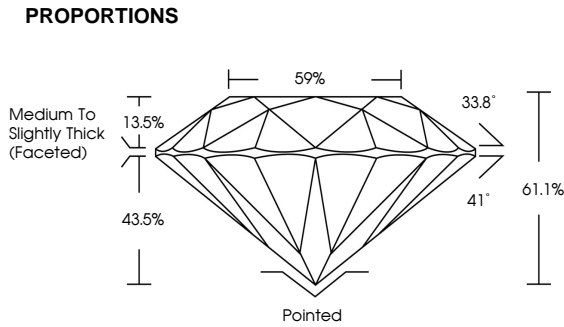


Table for COLOR grading: D, E, F, G, H, I, J, Faint, Very Light, Light

Table for CLARITY grading: IF, WS 1-2, VS 1-2, SI 1-2, I 1-3, Internally Flawless, Very Very Slightly Included, Very Slightly Included, Slightly Included, Included

