



ELECTRONIC COPY

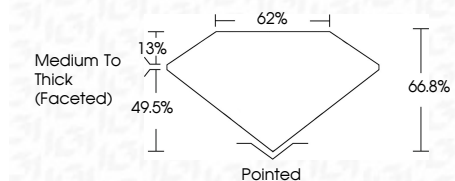
LG651476016 Report verification at igi.org



September 7, 2024 IGI Report Number LG651476016 Description LABORATORY GROWN DIAMOND Shape and Cutting Style SQUARE CUSHION BRILLIANT Measurements 6.24 X 6.12 X 4.09 MM

GRADING RESULTS

Carat Weight 1.21 CARAT Color Grade E Clarity Grade VS 1



ADDITIONAL GRADING INFORMATION

Polish EXCELLENT Symmetry EXCELLENT Fluorescence NONE Inscription(s) IGI LG651476016 Comments: This Laboratory Grown Diamond was created by Chemical Vapor Deposition (CVD) growth process. Type IIa



September 7, 2024 IGI Report No LG651476016 SQUARE CUSHION BRILLIANT 6.24 X 6.12 X 4.09 MM 1.21 CARAT E VS 1 66.8% 62% Medium To Thick (Faceted) Pointed EXCELLENT EXCELLENT NONE IGI LG651476016 Comments: This Laboratory Grown Diamond was created by Chemical Vapor Deposition (CVD) growth process. Type IIa

LABORATORY GROWN DIAMOND REPORT

September 7, 2024 IGI Report Number LG651476016 Description LABORATORY GROWN DIAMOND Shape and Cutting Style SQUARE CUSHION BRILLIANT Measurements 6.24 X 6.12 X 4.09 MM

GRADING RESULTS

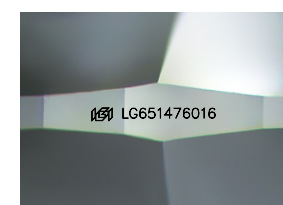
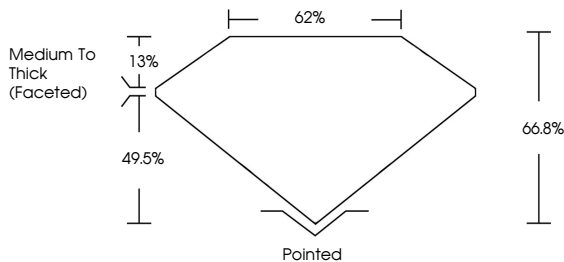
Carat Weight 1.21 CARAT Color Grade E Clarity Grade VS 1

ADDITIONAL GRADING INFORMATION

Polish EXCELLENT Symmetry EXCELLENT Fluorescence NONE Inscription(s) IGI LG651476016

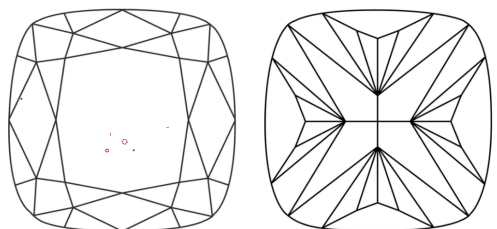
Comments: This Laboratory Grown Diamond was created by Chemical Vapor Deposition (CVD) growth process. Type IIa

PROPORTIONS



Sample Image Used

CLARITY CHARACTERISTICS



KEY TO SYMBOLS

Red symbols indicate internal characteristics. Green symbols indicate external characteristics.

COLOR

D E F G H I J Faint Very Light Light

CLARITY

IF WS 1-2 VS 1-2 SI 1-2 I 1-3 Internally Flawless Very Very Slightly Included Very Slightly Included Slightly Included Included

