



ELECTRONIC COPY

LG651480109 Report verification at igi.org



October 4, 2024

IGI Report Number LG651480109

Description LABORATORY GROWN DIAMOND

Shape and Cutting Style ROUND BRILLIANT

Measurements 7.47 - 7.50 X 4.54 MM

GRADING RESULTS

Carat Weight 1.57 CARAT

Color Grade H

Clarity Grade VS 1

Cut Grade EXCELLENT

October 4, 2024

IGI Report Number LG651480109

Description LABORATORY GROWN DIAMOND

Shape and Cutting Style ROUND BRILLIANT

Measurements 7.47 - 7.50 X 4.54 MM

GRADING RESULTS

Carat Weight 1.57 CARAT

Color Grade H

Clarity Grade VS 1

Cut Grade EXCELLENT

ADDITIONAL GRADING INFORMATION

Polish VERY GOOD

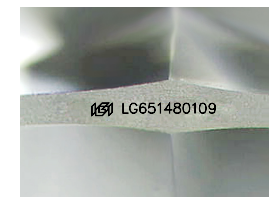
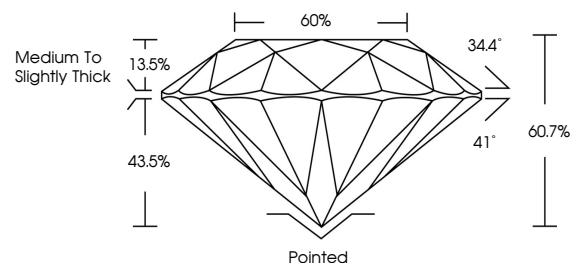
Symmetry EXCELLENT

Fluorescence NONE

Inscription(s) IGI LG651480109

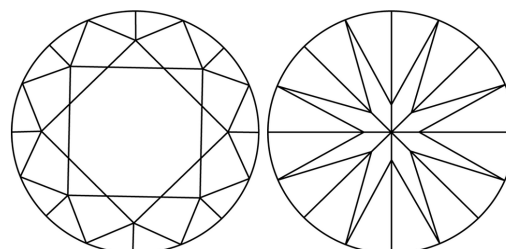
Comments: This Laboratory Grown Diamond was created by Chemical Vapor Deposition (CVD) growth process. Type IIa

PROPORTIONS



Sample Image Used

CLARITY CHARACTERISTICS



KEY TO SYMBOLS

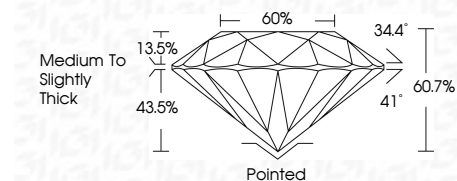
Red symbols indicate internal characteristics. Green symbols indicate external characteristics.

COLOR

D E F G H I J Faint Very Light Light

CLARITY

IF	VS ¹⁻²	VS ¹⁻²	SI ¹⁻²	I ¹⁻³
Internally Flawless	Very Very Slightly Included	Very Slightly Included	Slightly Included	Included



ADDITIONAL GRADING INFORMATION

Polish VERY GOOD

Symmetry EXCELLENT

Fluorescence NONE

Inscription(s) IGI LG651480109

Comments: This Laboratory Grown Diamond was created by Chemical Vapor Deposition (CVD) growth process. Type IIa



IGI



October 4, 2024
IGI Report No LG651480109
ROUND BRILLIANT

1.57 CARAT
H

VS 1
EXCELLENT

7.47 - 7.50 X 4.54 MM
60.7%
66%

Medium To Slightly Thick

Pointed
VERY GOOD
EXCELLENT

NONE
IGI LG651480109

Comments: This Laboratory Grown Diamond was created by Chemical Vapor Deposition (CVD) growth process. Type IIa