



ELECTRONIC COPY

LABORATORY GROWN DIAMOND REPORT

LG651482766
Report verification at igi.org

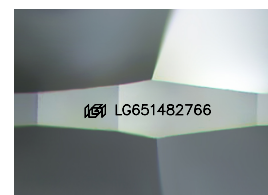
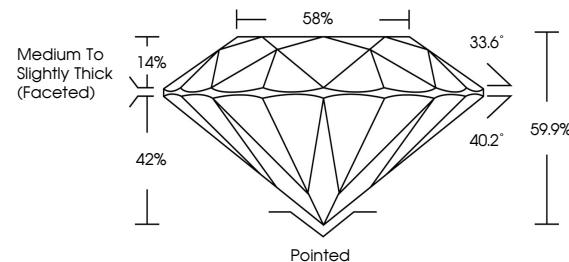
September 25, 2024	
IGI Report Number	LG651482766
Description	LABORATORY GROWN DIAMOND
Shape and Cutting Style	ROUND BRILLIANT
Measurements	8.77 - 8.80 X 5.26 MM
GRADING RESULTS	
Carat Weight	2.52 CARATS
Color Grade	I
Clarity Grade	VVS 2
Cut Grade	IDEAL

ADDITIONAL GRADING INFORMATION

Polish	EXCELLENT
Symmetry	EXCELLENT
Fluorescence	NONE
Inscription(s)	151 LG651482766

Comments: This Laboratory Grown Diamond was created by Chemical Vapor Deposition (CVD) growth process.
Type IIa

PROPORTIONS



Sample Image Used

COLOR

D E F G H I J Faint Very Light Light

CLARITY

IF	VVS ¹⁻²	VS ¹⁻²	SI ¹⁻²	I ¹⁻³
Internally Flawless	Very Very Slightly Included	Very Slightly Included	Slightly Included	Included

© IGI 2020, International Gemological Institute

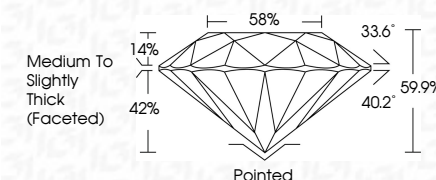
FD - 10 20

www.igi.org

LABORATORY GROWN DIAMOND REPORT



September 25, 2024	
IGI Report Number	LG651482766
Description	LABORATORY GROWN DIAMOND
Shape and Cutting Style	ROUND BRILLIANT
Measurements	8.77 - 8.80 X 5.26 MM
GRADING RESULTS	
Carat Weight	2.52 CARATS
Color Grade	I
Clarity Grade	VVS 2
Cut Grade	IDEAL



ADDITIONAL GRADING INFORMATION

Polish	EXCELLENT
Symmetry	EXCELLENT
Fluorescence	NONE
Inscription(s)	163 LG651482766
Comments: This Laboratory Grown Diamond was created by Chemical Vapor Deposition (CVD) growth process.	
Type IIa	



Sepember 25, 2024	
G Report No L6561482766	
ROUND BRILLIANT	
2.62 CARATS	
I	
VVS 2	
IDEA	
59.9%	
85%	
Medium to slightly Thick Facetted	
Poished	
B'CELLENT	
EXCELLENT	
NONE	
#GSI L6561482766	

Comments:

This Laboratory Grown Diamond was created by Chemical Vapor Deposition growth process.

Type IIa