



ELECTRONIC COPY

LG651490687
Report verification at igi.org



September 10, 2024
IGI Report Number **LG651490687**
Description **LABORATORY GROWN DIAMOND**
Shape and Cutting Style **CUT CORNERED
RECTANGULAR MODIFIED
BRILLIANT**
Measurements **9.59 X 6.47 X 4.39 MM**
GRADING RESULTS
Carat Weight **2.35 CARATS**
Color Grade **E**
Clarity Grade **VS 1**

September 10, 2024
IGI Report Number **LG651490687**
Description **LABORATORY GROWN DIAMOND**
Shape and Cutting Style **CUT CORNERED RECTANGULAR
MODIFIED BRILLIANT**
Measurements **9.59 X 6.47 X 4.39 MM**

GRADING RESULTS

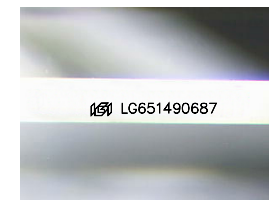
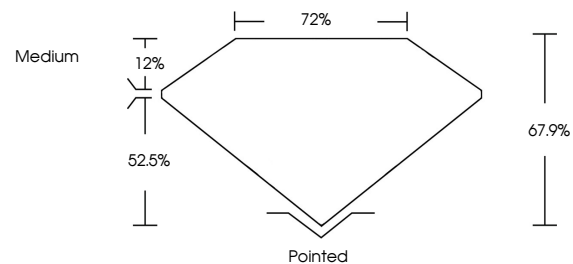
Carat Weight **2.35 CARATS**
Color Grade **E**
Clarity Grade **VS 1**

ADDITIONAL GRADING INFORMATION

Polish **EXCELLENT**
Symmetry **EXCELLENT**
Fluorescence **NONE**
Inscription(s) **IGI LG651490687**

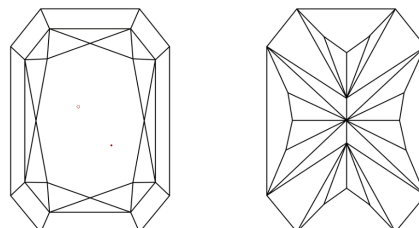
Comments: This Laboratory Grown Diamond was created by Chemical Vapor Deposition (CVD) growth process. Type IIa

PROPORTIONS



Sample Image Used

CLARITY CHARACTERISTICS



KEY TO SYMBOLS

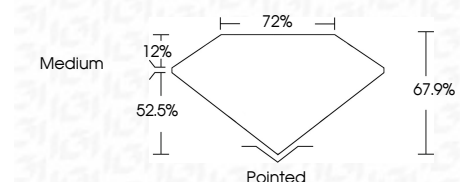
Red symbols indicate internal characteristics.
Green symbols indicate external characteristics.

COLOR

D E F G H I J Faint Very Light Light

CLARITY

IF	VS ¹⁻²	VS ¹⁻²	SI ¹⁻²	I ¹⁻³
Internally Flawless	Very Very Slightly Included	Very Slightly Included	Slightly Included	Included



ADDITIONAL GRADING INFORMATION

Polish **EXCELLENT**
Symmetry **EXCELLENT**
Fluorescence **NONE**
Inscription(s) **IGI LG651490687**
Comments: This Laboratory Grown Diamond was created by Chemical Vapor Deposition (CVD) growth process. Type IIa



IGI



September 10, 2024
IGI Report No LG651490687
CUT CORNERED RECT. MODIFIED BRILLIANT
9.59 X 6.47 X 4.39 MM
2.35 CARATS
E
VS 1
67.9%
72%
Medium
Pointed
EXCELLENT
EXCELLENT
NONE
IGI LG651490687
Comments: This Laboratory Grown Diamond was created by Chemical Vapor Deposition (CVD) growth process. Type IIa