



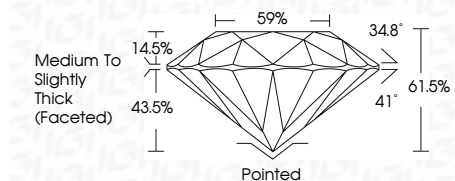
ELECTRONIC COPY

LG651491743 Report verification at igi.org



September 10, 2024 IGI Report Number LG651491743 Description LABORATORY GROWN DIAMOND Shape and Cutting Style ROUND BRILLIANT Measurements 6.91 - 6.93 X 4.26 MM

GRADING RESULTS Carat Weight 1.26 CARAT Color Grade E Clarity Grade VS 1 Cut Grade IDEAL



ADDITIONAL GRADING INFORMATION Polish EXCELLENT Symmetry EXCELLENT Fluorescence NONE Inscription(s) IGI LG651491743

Comments: This Laboratory Grown Diamond was created by Chemical Vapor Deposition (CVD) growth process. Type IIa

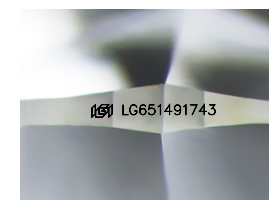
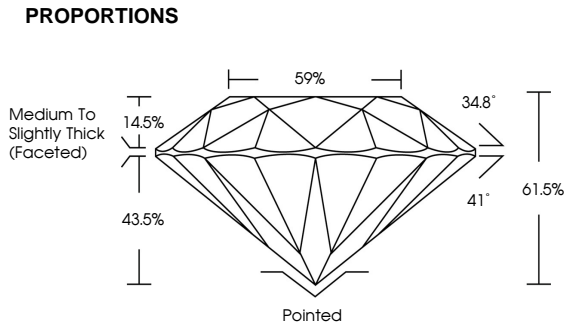


September 10, 2024 IGI Report No LG651491743 ROUND BRILLIANT 6.91 - 6.93 X 4.26 MM 1.26 CARAT E VS 1 IDEAL 61.5% 59% Medium To Slightly Thick (Faceted) Pointed EXCELLENT EXCELLENT NONE IGI LG651491743

September 10, 2024 IGI Report Number LG651491743 Description LABORATORY GROWN DIAMOND Shape and Cutting Style ROUND BRILLIANT Measurements 6.91 - 6.93 X 4.26 MM GRADING RESULTS Carat Weight 1.26 CARAT Color Grade E Clarity Grade VS 1 Cut Grade IDEAL

ADDITIONAL GRADING INFORMATION Polish EXCELLENT Symmetry EXCELLENT Fluorescence NONE Inscription(s) IGI LG651491743

Comments: This Laboratory Grown Diamond was created by Chemical Vapor Deposition (CVD) growth process. Type IIa



Sample Image Used

COLOR table with columns D, E, F, G, H, I, J and values Faint, Very Light, Light

CLARITY table with columns IF, VS 1-2, VS 1-2, SI 1-2, I 1-3 and values Internally Flawless, Very Very Slightly Included, Very Slightly Included, Slightly Included, Included

