



ELECTRONIC COPY

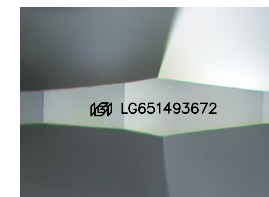
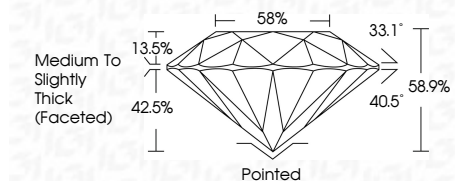
LG651493672
Report verification at igi.org



September 12, 2024
IGI Report Number LG651493672
Description LABORATORY GROWN DIAMOND
Shape and Cutting Style ROUND BRILLIANT
Measurements 6.55 - 6.58 X 3.87 MM

GRADING RESULTS

Carat Weight 1.01 CARAT
Color Grade E
Clarity Grade VS 1
Cut Grade IDEAL



Sample Image Used

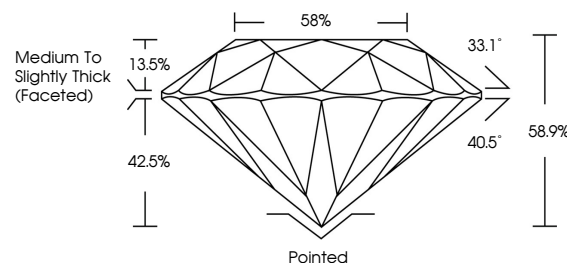
ADDITIONAL GRADING INFORMATION

Polish EXCELLENT
Symmetry EXCELLENT
Fluorescence NONE
Inscription(s) IGI LG651493672
Comments: This Laboratory Grown Diamond was created by Chemical Vapor Deposition (CVD) growth process. Type IIa

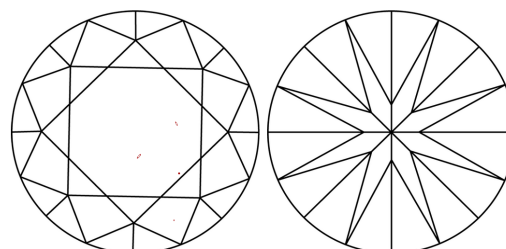


September 12, 2024
IGI Report No. LG651493672
ROUND BRILLIANT
6.55 - 6.58 X 3.87 MM
1.01 CARAT
E
VS 1
IDEAL
58.9%
58%
Medium To Slightly Thick (Faceted)
Pointed
EXCELLENT
EXCELLENT
NONE
IGI LG651493672
Comments: This Laboratory Grown Diamond was created by Chemical Vapor Deposition (CVD) growth process. Type IIa

PROPORTIONS



CLARITY CHARACTERISTICS



KEY TO SYMBOLS

Red symbols indicate internal characteristics.
Green symbols indicate external characteristics.

COLOR

D E F G H I J Faint Very Light Light

CLARITY

IF VS 1-2 VS 1-2 SI 1-2 I 1-3
Internally Flawless Very Very Slightly Included Very Slightly Included Slightly Included Included

