



ELECTRONIC COPY

LABORATORY GROWN DIAMOND REPORT

September 11, 2024
IGI Report Number LG651493980
Description LABORATORY GROWN DIAMOND
Shape and Cutting Style CUT CORNERED RECTANGULAR MODIFIED BRILLIANT
Measurements 12.91 X 8.78 X 6.13 MM

GRADING RESULTS

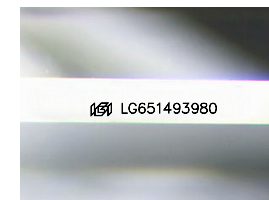
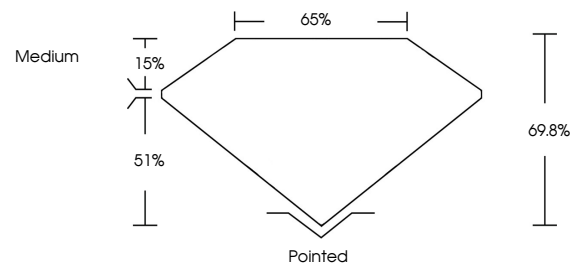
Carat Weight 6.05 CARATS
Color Grade G
Clarity Grade VVS 2

ADDITIONAL GRADING INFORMATION

Polish EXCELLENT
Symmetry EXCELLENT
Fluorescence NONE
Inscription(s) LG651493980

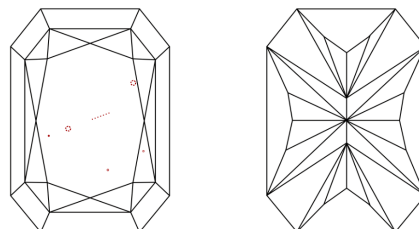
Comments: This Laboratory Grown Diamond was created by Chemical Vapor Deposition (CVD) growth process. Type IIa

PROPORTIONS



Sample Image Used

CLARITY CHARACTERISTICS



KEY TO SYMBOLS

Red symbols indicate internal characteristics. Green symbols indicate external characteristics.

COLOR

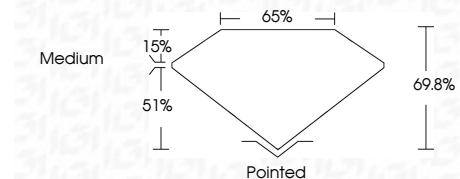
D E F G H I J Faint Very Light Light

CLARITY

IF VS 1-2 VS 1-2 SI 1-2 I 1-3
Internally Flawless Very Very Slightly Included Very Slightly Included Slightly Included Included



September 11, 2024
IGI Report Number LG651493980
Description LABORATORY GROWN DIAMOND
Shape and Cutting Style CUT CORNERED RECTANGULAR MODIFIED BRILLIANT
Measurements 12.91 X 8.78 X 6.13 MM
GRADING RESULTS
Carat Weight 6.05 CARATS
Color Grade G
Clarity Grade VVS 2



ADDITIONAL GRADING INFORMATION

Polish EXCELLENT
Symmetry EXCELLENT
Fluorescence NONE
Inscription(s) LG651493980
Comments: This Laboratory Grown Diamond was created by Chemical Vapor Deposition (CVD) growth process. Type IIa



September 11, 2024
IGI Report No LG651493980
CUT CORNERED RECT. MODIFIED BRILLIANT
12.91 X 8.78 X 6.13 MM
6.05 CARATS G
VVS 2
69.8% 65%
Medium
Pointed
EXCELLENT EXCELLENT
NONE
Inscription(s) LG651493980
Comments: This Laboratory Grown Diamond was created by Chemical Vapor Deposition (CVD) growth process. Type IIa