



**ELECTRONIC COPY**

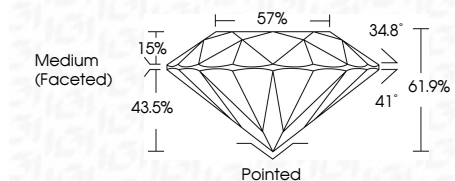
LG651495152  
Report verification at igi.org



September 10, 2024  
IGI Report Number **LG651495152**  
Description **LABORATORY GROWN DIAMOND**  
Shape and Cutting Style **ROUND BRILLIANT**  
Measurements **7.35 - 7.37 X 4.55 MM**

**GRADING RESULTS**

Carat Weight **1.51 CARAT**  
Color Grade **G**  
Clarity Grade **VS 1**  
Cut Grade **IDEAL**

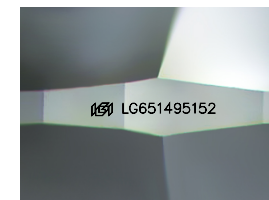


**ADDITIONAL GRADING INFORMATION**

Polish **EXCELLENT**  
Symmetry **EXCELLENT**  
Fluorescence **NONE**  
Inscription(s) **IGI LG651495152**  
Comments: This Laboratory Grown Diamond was created by Chemical Vapor Deposition (CVD) growth process. Type IIa

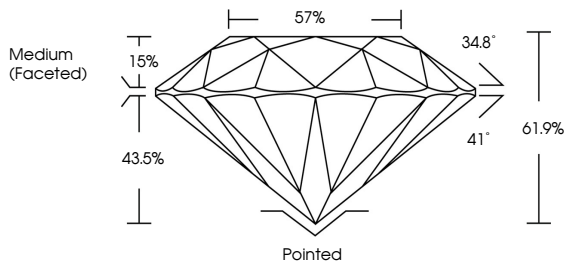


September 10, 2024  
IGI Report No LG651495152  
**ROUND BRILLIANT**  
7.35 - 7.37 X 4.55 MM  
1.51 CARAT  
Color Grade **G**  
Clarity Grade **VS 1**  
Cut Grade **IDEAL**  
Depth **61.9%**  
Table **15%**  
Diameter **57%**  
Medium (Faceted)  
Culet **Pointed**  
Polish **EXCELLENT**  
Symmetry **EXCELLENT**  
Fluorescence **NONE**  
Inscription(s) **IGI LG651495152**  
Comments: This Laboratory Grown Diamond was created by Chemical Vapor Deposition (CVD) growth process. Type IIa

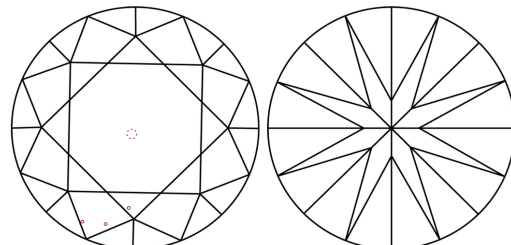


Sample Image Used

**PROPORTIONS**



**CLARITY CHARACTERISTICS**



**KEY TO SYMBOLS**

Red symbols indicate internal characteristics.  
Green symbols indicate external characteristics.

**COLOR**

D	E	F	G	H	I	J	Faint	Very Light	Light
---	---	---	---	---	---	---	-------	------------	-------

**CLARITY**

IF	VS <sup>1-2</sup>	VS <sup>1-2</sup>	SI <sup>1-2</sup>	I <sup>1-3</sup>
Internally Flawless	Very Very Slightly Included	Very Slightly Included	Slightly Included	Included

