



ELECTRONIC COPY

LG651495213
Report verification at igi.org



September 21, 2024
IGI Report Number **LG651495213**
Description **LABORATORY GROWN DIAMOND**
Shape and Cutting Style **ROUND BRILLIANT**
Measurements **7.38 - 7.46 X 4.67 MM**
GRADING RESULTS
Carat Weight **1.60 CARAT**
Color Grade **FANCY INTENSE GREEN**
Clarity Grade **VS 1**
Cut Grade **EXCELLENT**

September 21, 2024
IGI Report Number **LG651495213**
Description **LABORATORY GROWN DIAMOND**
Shape and Cutting Style **ROUND BRILLIANT**
Measurements **7.38 - 7.46 X 4.67 MM**

GRADING RESULTS

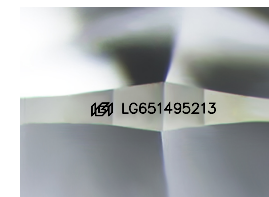
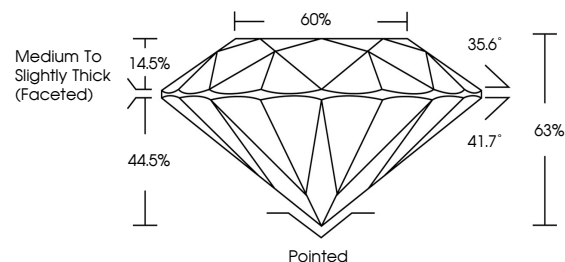
Carat Weight **1.60 CARAT**
Color Grade **FANCY INTENSE GREEN**
Clarity Grade **VS 1**
Cut Grade **EXCELLENT**

ADDITIONAL GRADING INFORMATION

Polish **EXCELLENT**
Symmetry **EXCELLENT**
Fluorescence **VERY SLIGHT**
Inscription(s) **LG651495213**

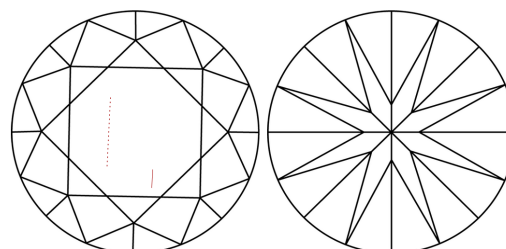
Comments: This Laboratory Grown Diamond was created by Chemical Vapor Deposition (CVD) growth process.
Indications of post-growth treatment.

PROPORTIONS



Sample Image Used

CLARITY CHARACTERISTICS



KEY TO SYMBOLS

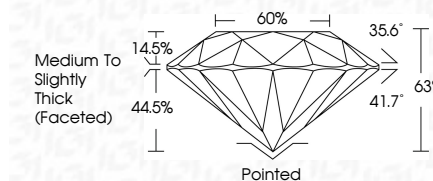
Red symbols indicate internal characteristics.
Green symbols indicate external characteristics.

COLOR

D E F G H I J Faint Very Light Light

CLARITY

IF	VS ¹⁻²	VS ¹⁻²	SI ¹⁻²	I ¹⁻³
Internally Flawless	Very Very Slightly Included	Very Slightly Included	Slightly Included	Included



ADDITIONAL GRADING INFORMATION

Polish **EXCELLENT**
Symmetry **EXCELLENT**
Fluorescence **VERY SLIGHT**
Inscription(s) **LG651495213**
Comments: This Laboratory Grown Diamond was created by Chemical Vapor Deposition (CVD) growth process.
Indications of post-growth treatment.



IGI



September 21, 2024
IGI Report No LG651495213
ROUND BRILLIANT
1.60 CARAT
FANCY INTENSE GREEN
VS 1
EXCELLENT
63%
60%
Medium To Slightly Thick (Faceted)
Pointed
EXCELLENT
EXCELLENT
VERY SLIGHT
EXCELLENT
IGI LG651495213
Comments: This Laboratory Grown Diamond was created by Chemical Vapor Deposition (CVD) growth process.
Indications of post-growth treatment.