



ELECTRONIC COPY

LG651495215
Report verification at igi.org



September 21, 2024
IGI Report Number **LG651495215**
Description **LABORATORY GROWN DIAMOND**
Shape and Cutting Style **EMERALD CUT**
Measurements **8.01 X 5.35 X 3.53 MM**
GRADING RESULTS
Carat Weight **1.58 CARAT**
Color Grade **FANCY DEEP ORANGE**
Clarity Grade **VVS 2**

LABORATORY GROWN DIAMOND REPORT

September 21, 2024
IGI Report Number **LG651495215**
Description **LABORATORY GROWN DIAMOND**
Shape and Cutting Style **EMERALD CUT**
Measurements **8.01 X 5.35 X 3.53 MM**

GRADING RESULTS

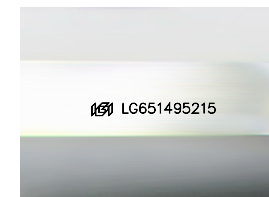
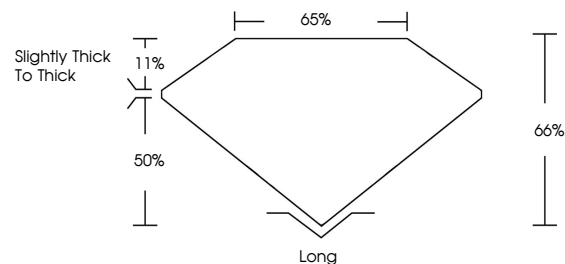
Carat Weight **1.58 CARAT**
Color Grade **FANCY DEEP ORANGE**
Clarity Grade **VVS 2**

ADDITIONAL GRADING INFORMATION

Polish **EXCELLENT**
Symmetry **EXCELLENT**
Fluorescence **NONE**
Inscription(s) **LG651495215**

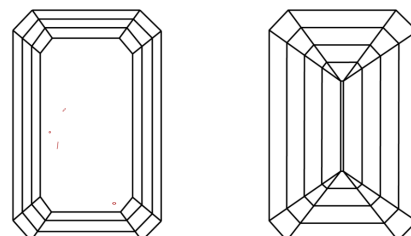
Comments: This Laboratory Grown Diamond was created by Chemical Vapor Deposition (CVD) growth process.
Indications of post-growth treatment.

PROPORTIONS



Sample Image Used

CLARITY CHARACTERISTICS



KEY TO SYMBOLS

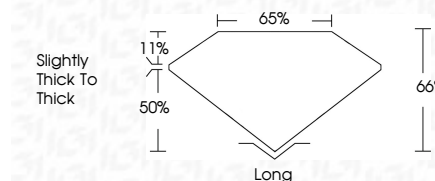
Red symbols indicate internal characteristics.
Green symbols indicate external characteristics.

COLOR

D E F G H I J Faint Very Light Light

CLARITY

IF	VS ¹⁻²	VS ¹⁻²	SI ¹⁻²	I ¹⁻³
Internally Flawless	Very Very Slightly Included	Very Slightly Included	Slightly Included	Included



ADDITIONAL GRADING INFORMATION

Polish **EXCELLENT**
Symmetry **EXCELLENT**
Fluorescence **NONE**
Inscription(s) **LG651495215**
Comments: This Laboratory Grown Diamond was created by Chemical Vapor Deposition (CVD) growth process.
Indications of post-growth treatment.



September 21, 2024
IGI Report No LG651495215
EMERALD CUT
8.01 X 5.35 X 3.53 MM
1.58 CARAT
FANCY DEEP ORANGE
VVS 2
66%
50%
Slightly Thick To Thick
Long
EXCELLENT
EXCELLENT
NONE
IGI LG651495215
Comments: This Laboratory Grown Diamond was created by Chemical Vapor Deposition (CVD) growth process.
Indications of post-growth treatment.