



**ELECTRONIC COPY**

LG651497905  
Report verification at igi.org



September 11, 2024

IGI Report Number **LG651497905**

Description **LABORATORY GROWN DIAMOND**

Shape and Cutting Style **CUT CORNERED  
RECTANGULAR MODIFIED  
BRILLIANT**

Measurements **8.90 X 6.43 X 4.19 MM**

**GRADING RESULTS**

Carat Weight **2.22 CARATS**

Color Grade **D**

Clarity Grade **VVS 1**

September 11, 2024  
IGI Report Number **LG651497905**  
Description **LABORATORY GROWN DIAMOND**  
Shape and Cutting Style **CUT CORNERED RECTANGULAR  
MODIFIED BRILLIANT**  
Measurements **8.90 X 6.43 X 4.19 MM**

**GRADING RESULTS**

Carat Weight **2.22 CARATS**

Color Grade **D**

Clarity Grade **VVS 1**

**ADDITIONAL GRADING INFORMATION**

Polish **EXCELLENT**

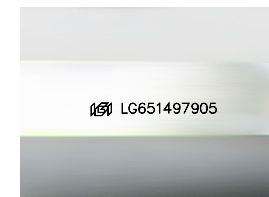
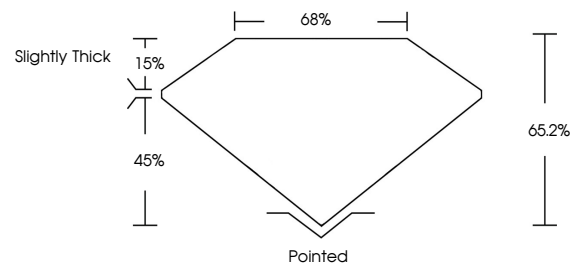
Symmetry **EXCELLENT**

Fluorescence **NONE**

Inscription(s) **IGI LG651497905**

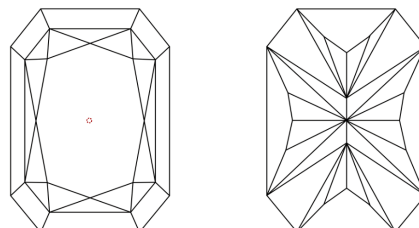
Comments: This Laboratory Grown Diamond was created by Chemical Vapor Deposition (CVD) growth process.  
Type IIa

**PROPORTIONS**



Sample Image Used

**CLARITY CHARACTERISTICS**



**KEY TO SYMBOLS**

Red symbols indicate internal characteristics.  
Green symbols indicate external characteristics.

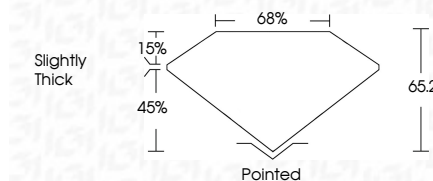
**COLOR**

D E F G H I J Faint Very Light Light

**CLARITY**

IF VS<sup>1-2</sup> VS<sup>1-2</sup> SI<sup>1-2</sup> I<sup>1-3</sup>

Internally Flawless Very Very Slightly Included Very Slightly Included Slightly Included Included



**ADDITIONAL GRADING INFORMATION**

Polish **EXCELLENT**

Symmetry **EXCELLENT**

Fluorescence **NONE**

Inscription(s) **IGI LG651497905**

Comments: This Laboratory Grown Diamond was created by Chemical Vapor Deposition (CVD) growth process.  
Type IIa



**IGI**



September 11, 2024  
IGI Report No LG651497905  
CUT CORNERED RECT. MODIFIED BRILLIANT  
8.90 X 6.43 X 4.19 MM  
2.22 CARATS  
D  
Color Grade  
Clarity Grade VVS 1  
Table 65.2%  
Girdle 65%  
Slightly Thick  
Pointed  
Polish EXCELLENT  
Symmetry EXCELLENT  
Fluorescence NONE  
Inscription(s) IGI LG651497905  
Comments: This Laboratory Grown Diamond was created by Chemical Vapor Deposition (CVD) growth process.  
Type IIa