



ELECTRONIC COPY

LABORATORY GROWN DIAMOND REPORT

September 19, 2024
IGI Report Number LG652401000
Description LABORATORY GROWN DIAMOND
Shape and Cutting Style CUT CORNERED RECTANGULAR MODIFIED BRILLIANT
Measurements 8.75 X 6.17 X 4.17 MM

GRADING RESULTS

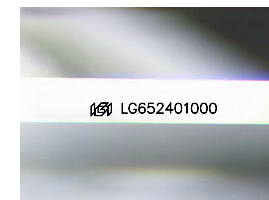
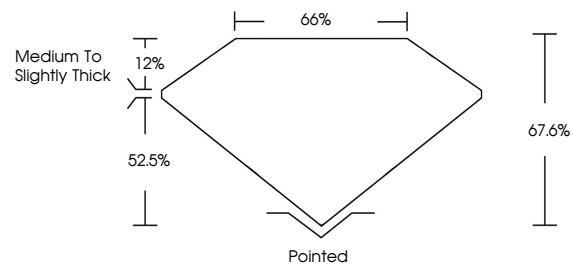
Carat Weight 1.90 CARAT
Color Grade D
Clarity Grade VS 1

ADDITIONAL GRADING INFORMATION

Polish EXCELLENT
Symmetry EXCELLENT
Fluorescence NONE
Inscription(s) LG652401000

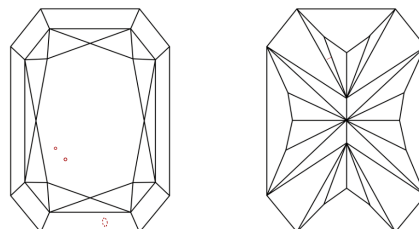
Comments: This Laboratory Grown Diamond was created by Chemical Vapor Deposition (CVD) growth process.
Type IIa

PROPORTIONS



Sample Image Used

CLARITY CHARACTERISTICS



KEY TO SYMBOLS

Red symbols indicate internal characteristics.
Green symbols indicate external characteristics.

COLOR

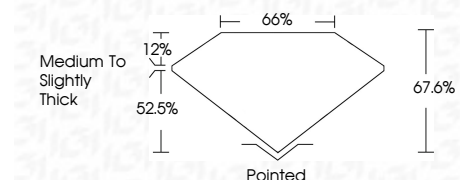
D E F G H I J Faint Very Light Light

CLARITY

IF VS 1-2 VS 1-2 SI 1-2 I 1-3
Internally Flawless Very Very Slightly Included Very Slightly Included Slightly Included Included



September 19, 2024
IGI Report Number LG652401000
Description LABORATORY GROWN DIAMOND
Shape and Cutting Style CUT CORNERED RECTANGULAR MODIFIED BRILLIANT
Measurements 8.75 X 6.17 X 4.17 MM
GRADING RESULTS
Carat Weight 1.90 CARAT
Color Grade D
Clarity Grade VS 1



ADDITIONAL GRADING INFORMATION

Polish EXCELLENT
Symmetry EXCELLENT
Fluorescence NONE
Inscription(s) LG652401000
Comments: This Laboratory Grown Diamond was created by Chemical Vapor Deposition (CVD) growth process.
Type IIa



September 19, 2024
IGI Report No LG652401000
CUT CORNERED RECT. MODIFIED BRILLIANT
8.75 X 6.17 X 4.17 MM
1.90 CARAT
D
VS 1
67.6%
66%
Medium to Slightly Thick
Pointed
EXCELLENT
EXCELLENT
NONE
NONE
 LG652401000
Comments: This Laboratory Grown Diamond was created by Chemical Vapor Deposition (CVD) growth process.
Type IIa