



ELECTRONIC COPY

LG652401506
Report verification at igi.org



September 20, 2024

IGI Report Number **LG652401506**

Description **LABORATORY GROWN DIAMOND**

Shape and Cutting Style **ROUND BRILLIANT**

Measurements **9.76 - 9.80 X 6.04 MM**

GRADING RESULTS

Carat Weight **3.54 CARATS**

Color Grade **D**

Clarity Grade **VS 2**

Cut Grade **IDEAL**

September 20, 2024
IGI Report Number **LG652401506**
Description **LABORATORY GROWN DIAMOND**
Shape and Cutting Style **ROUND BRILLIANT**
Measurements **9.76 - 9.80 X 6.04 MM**

GRADING RESULTS

Carat Weight **3.54 CARATS**

Color Grade **D**

Clarity Grade **VS 2**

Cut Grade **IDEAL**

ADDITIONAL GRADING INFORMATION

Polish **EXCELLENT**

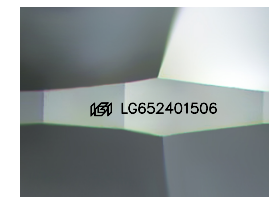
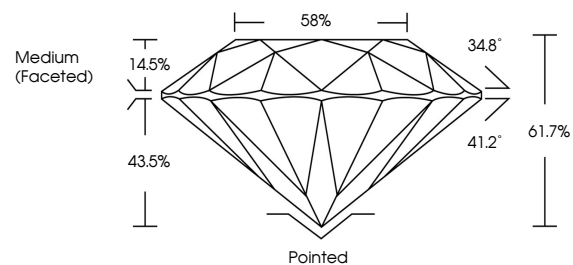
Symmetry **EXCELLENT**

Fluorescence **NONE**

Inscription(s) **LG652401506**

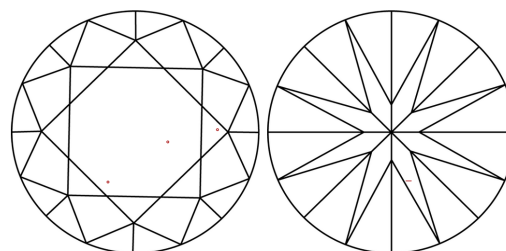
Comments: HEARTS & ARROWS
This Laboratory Grown Diamond was created by
Chemical Vapor Deposition (CVD) growth process.
Type IIa

PROPORTIONS



Sample Image Used

CLARITY CHARACTERISTICS



KEY TO SYMBOLS

Red symbols indicate internal characteristics.
Green symbols indicate external characteristics.

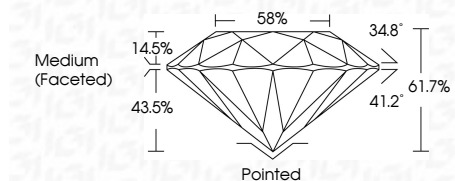


COLOR

D E F G H I J Faint Very Light Light

CLARITY

| | | | | |
|---------------------|-----------------------------|------------------------|-------------------|------------------|
| IF | VS ¹⁻² | VS ¹⁻² | SI ¹⁻² | I ¹⁻³ |
| Internally Flawless | Very Very Slightly Included | Very Slightly Included | Slightly Included | Included |



ADDITIONAL GRADING INFORMATION

Polish **EXCELLENT**

Symmetry **EXCELLENT**

Fluorescence **NONE**

Inscription(s) **LG652401506**

Comments: HEARTS & ARROWS
This Laboratory Grown Diamond was created by
Chemical Vapor Deposition (CVD) growth process.
Type IIa



| | | | | | | | | | | | | | | |
|---------------------------|---------------------------|------------------------|--------------------|----------|-------------|--------------|--------------|------------|-------------------------|----------------|------------------|------------------|-------------|--------------------|
| September 20, 2024 | IGI Report No LG652401506 | ROUND BRILLIANT | 3.54 CARATS | D | VS 2 | IDEAL | 61.7% | 58% | Medium (Faceted) | Pointed | EXCELLENT | EXCELLENT | NONE | LG652401506 |
| IGI Report No LG652401506 | 9.76 - 9.80 X 6.04 MM | ROUND BRILLIANT | 3.54 CARATS | D | VS 2 | IDEAL | 61.7% | 58% | Medium (Faceted) | Pointed | EXCELLENT | EXCELLENT | NONE | IGI LG652401506 |