



ELECTRONIC COPY

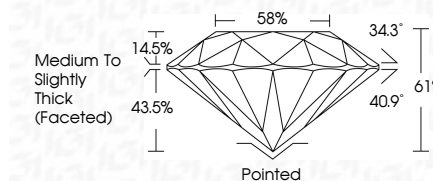
LG652402036 Report verification at igi.org



September 19, 2024 IGI Report Number LG652402036 Description LABORATORY GROWN DIAMOND Shape and Cutting Style ROUND BRILLIANT Measurements 8.36 - 8.41 X 5.12 MM

GRADING RESULTS

Carat Weight 2.21 CARATS Color Grade D Clarity Grade VS 1 Cut Grade IDEAL



ADDITIONAL GRADING INFORMATION

Polish EXCELLENT Symmetry EXCELLENT Fluorescence NONE Inscription(s) LG652402036 Comments: HEARTS & ARROWS This Laboratory Grown Diamond was created by Chemical Vapor Deposition (CVD) growth process. Type IIa



September 19, 2024 IGI Report No LG652402036 ROUND BRILLIANT 8.36 - 8.41 X 5.12 MM 2.21 CARATS D VS 1 IDEAL 61% 58% Medium To Slightly Thick (Faceted) Pointed EXCELLENT EXCELLENT NONE LG652402036

Comments: HEARTS & ARROWS This Laboratory Grown Diamond was created by Chemical Vapor Deposition (CVD) growth process. Type IIa

September 19, 2024 IGI Report Number LG652402036 Description LABORATORY GROWN DIAMOND Shape and Cutting Style ROUND BRILLIANT Measurements 8.36 - 8.41 X 5.12 MM

GRADING RESULTS

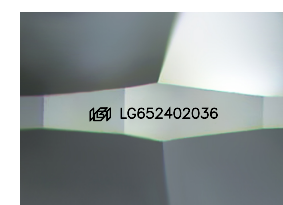
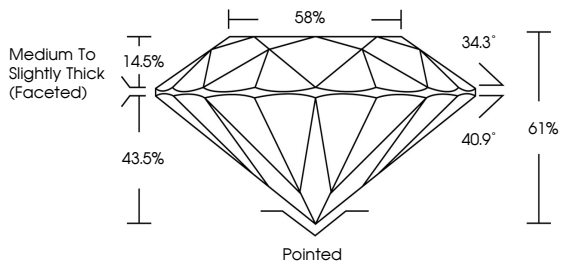
Carat Weight 2.21 CARATS Color Grade D Clarity Grade VS 1 Cut Grade IDEAL

ADDITIONAL GRADING INFORMATION

Polish EXCELLENT Symmetry EXCELLENT Fluorescence NONE Inscription(s) LG652402036

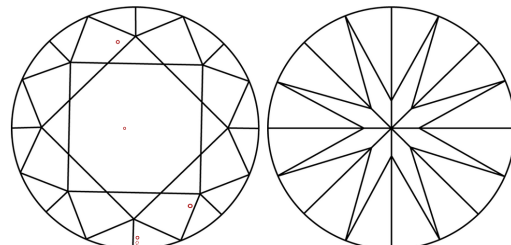
Comments: HEARTS & ARROWS This Laboratory Grown Diamond was created by Chemical Vapor Deposition (CVD) growth process. Type IIa

PROPORTIONS



Sample Image Used

CLARITY CHARACTERISTICS



KEY TO SYMBOLS

Red symbols indicate internal characteristics. Green symbols indicate external characteristics.



COLOR

D E F G H I J Faint Very Light Light

CLARITY

IF VS 1-2 VS 1-2 SI 1-2 I 1-3 Internally Flawless Very Very Slightly Included Very Slightly Included Slightly Included Included

