



ELECTRONIC COPY

LG652404229
Report verification at igi.org



September 20, 2024

IGI Report Number **LG652404229**

Description **LABORATORY GROWN DIAMOND**

Shape and Cutting Style **CUT CORNERED SQUARE
MODIFIED BRILLIANT**

Measurements **7.72 X 7.61 X 4.85 MM**

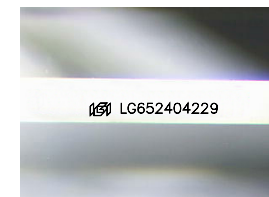
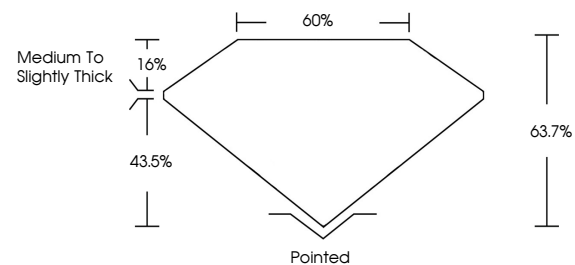
GRADING RESULTS

Carat Weight **2.56 CARATS**

Color Grade **D**

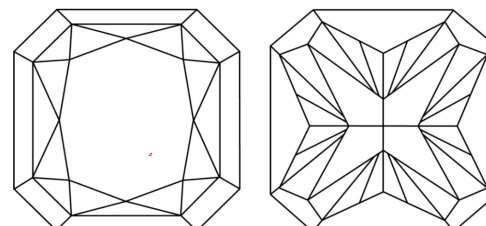
Clarity Grade **VVS 2**

PROPORTIONS



Sample Image Used

CLARITY CHARACTERISTICS



KEY TO SYMBOLS

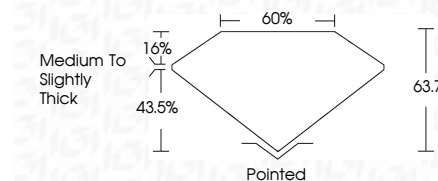
Red symbols indicate internal characteristics.
Green symbols indicate external characteristics.

COLOR

D E F G H I J Faint Very Light Light

CLARITY

IF	VS ¹⁻²	VS ¹⁻²	SI ¹⁻²	I ¹⁻³
Internally Flawless	Very Very Slightly Included	Very Slightly Included	Slightly Included	Included



ADDITIONAL GRADING INFORMATION

Polish **EXCELLENT**

Symmetry **EXCELLENT**

Fluorescence **NONE**

Inscription(s) **IGI LG652404229**

Comments: This Laboratory Grown Diamond was created by Chemical Vapor Deposition (CVD) growth process. Type IIa



IGI



September 20, 2024
IGI Report No. LG652404229
CUT CORNERED SQUARE MODIFIED BRILLIANT
7.72 X 7.61 X 4.85 MM
Carat Weight **2.56 CARATS**
Color Grade **D**
Clarity Grade **VVS 2**
Depth **43.7%**
Table **60%**
Girdle **Medium to Slightly Thick**
Culet **Pointed**
Polish **EXCELLENT**
Symmetry **EXCELLENT**
Fluorescence **NONE**
Inscription(s) **IGI LG652404229**
Comments: This Laboratory Grown Diamond was created by Chemical Vapor Deposition (CVD) growth process. Type IIa