



ELECTRONIC COPY

LG652404859
Report verification at igi.org

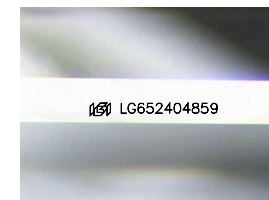


September 27, 2024
IGI Report Number **LG652404859**
Description **LABORATORY GROWN DIAMOND**
Shape and Cutting Style **CUT CORNERED
RECTANGULAR MODIFIED
BRILLIANT**

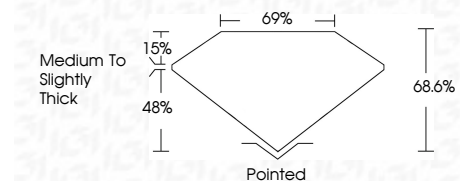
Measurements **12.46 X 8.05 X 5.52 MM**

GRADING RESULTS

Carat Weight **5.12 CARATS**
Color Grade **D**
Clarity Grade **VVS 1**



Sample Image Used



ADDITIONAL GRADING INFORMATION

Polish **EXCELLENT**
Symmetry **EXCELLENT**
Fluorescence **NONE**
Inscription(s) **(IGI) LG652404859**

Comments: This Laboratory Grown Diamond was created by Chemical Vapor Deposition (CVD) growth process. Type IIa



September 27, 2024
IGI Report No LG652404859
CUT CORNERED RECT. MODIFIED BRILLIANT
12.46 X 8.05 X 5.52 MM
5.12 CARATS
D
VVS 1
68.6%
69%
Medium to Slightly Thick
Pointed
EXCELLENT
EXCELLENT
NONE
(IGI) LG652404859
Comments: This Laboratory Grown Diamond was created by Chemical Vapor Deposition (CVD) growth process. Type IIa

September 27, 2024
IGI Report Number **LG652404859**
Description **LABORATORY GROWN DIAMOND**
Shape and Cutting Style **CUT CORNERED RECTANGULAR
MODIFIED BRILLIANT**
Measurements **12.46 X 8.05 X 5.52 MM**

GRADING RESULTS

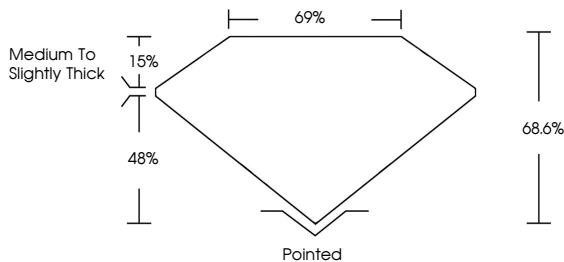
Carat Weight **5.12 CARATS**
Color Grade **D**
Clarity Grade **VVS 1**

ADDITIONAL GRADING INFORMATION

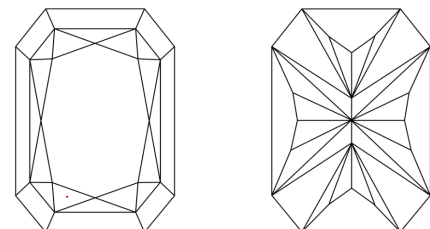
Polish **EXCELLENT**
Symmetry **EXCELLENT**
Fluorescence **NONE**
Inscription(s) **(IGI) LG652404859**

Comments: This Laboratory Grown Diamond was created by Chemical Vapor Deposition (CVD) growth process. Type IIa

PROPORTIONS



CLARITY CHARACTERISTICS



KEY TO SYMBOLS

Red symbols indicate internal characteristics.
Green symbols indicate external characteristics.

COLOR

D E F G H I J Faint Very Light Light

CLARITY

IF	VS ¹⁻²	VS ¹⁻²	SI ¹⁻²	I ¹⁻³
Internally Flawless	Very Very Slightly Included	Very Slightly Included	Slightly Included	Included

