



**ELECTRONIC COPY**

LG652406005  
Report verification at igi.org



September 28, 2024  
IGI Report Number **LG652406005**  
Description **LABORATORY GROWN DIAMOND**  
Shape and Cutting Style **CUT CORNERED  
RECTANGULAR MIXED CUT**  
Measurements **8.21 X 6.52 X 4.53 MM**  
**GRADING RESULTS**  
Carat Weight **2.37 CARATS**  
Color Grade **FANCY VIVID YELLOW**  
Clarity Grade **VVS 1**

**LABORATORY GROWN DIAMOND REPORT**

September 28, 2024  
IGI Report Number **LG652406005**  
Description **LABORATORY GROWN DIAMOND**  
Shape and Cutting Style **CUT CORNERED RECTANGULAR  
MIXED CUT**  
Measurements **8.21 X 6.52 X 4.53 MM**

**GRADING RESULTS**

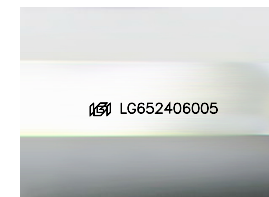
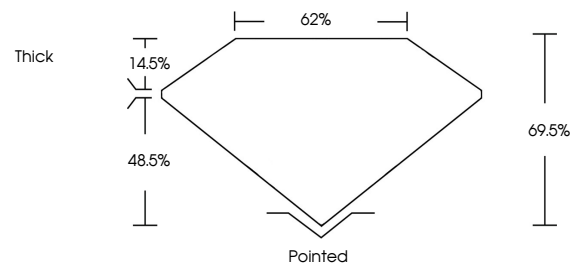
Carat Weight **2.37 CARATS**  
Color Grade **FANCY VIVID YELLOW**  
Clarity Grade **VVS 1**

**ADDITIONAL GRADING INFORMATION**

Polish **EXCELLENT**  
Symmetry **EXCELLENT**  
Fluorescence **NONE**  
Inscription(s) **IGI LG652406005**

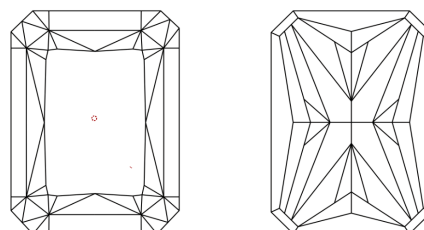
Comments: As Grown - No indication of post-growth treatment.  
This Laboratory Grown Diamond was created by High Pressure High Temperature (HPHT) growth process.

**PROPORTIONS**



Sample Image Used

**CLARITY CHARACTERISTICS**



**KEY TO SYMBOLS**

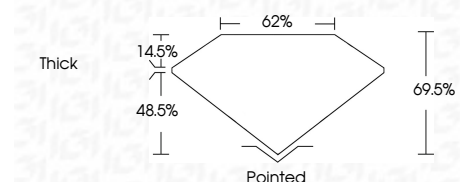
Red symbols indicate internal characteristics.  
Green symbols indicate external characteristics.

**COLOR**

D E F G H I J Faint Very Light Light

**CLARITY**

|                     |                             |                        |                   |                  |
|---------------------|-----------------------------|------------------------|-------------------|------------------|
| IF                  | VS <sup>1-2</sup>           | VS <sup>1-2</sup>      | SI <sup>1-2</sup> | I <sup>1-3</sup> |
| Internally Flawless | Very Very Slightly Included | Very Slightly Included | Slightly Included | Included         |



**ADDITIONAL GRADING INFORMATION**

Polish **EXCELLENT**  
Symmetry **EXCELLENT**  
Fluorescence **NONE**  
Inscription(s) **IGI LG652406005**  
Comments: As Grown - No indication of post-growth treatment.  
This Laboratory Grown Diamond was created by High Pressure High Temperature (HPHT) growth process.



**IGI**

September 28, 2024  
IGI Report No. **LG652406005**  
**CUT CORNERED RECT. MIXED CUT**  
**8.21 X 6.52 X 4.53 MM**  
Carat Weight **2.37 CARATS**  
Color Grade **FANCY VIVID YELLOW**  
Clarity Grade **VVS 1**  
Depth **69.5%**  
Table **62%**  
Girdle **Thick**  
Culet **Pointed**  
Polish **EXCELLENT**  
Symmetry **EXCELLENT**  
Fluorescence **NONE**  
Inscription(s) **IGI LG652406005**  
Comments: As Grown - No indication of post-growth treatment.  
This Laboratory Grown Diamond was created by High Pressure High Temperature (HPHT) growth process.