



ELECTRONIC COPY

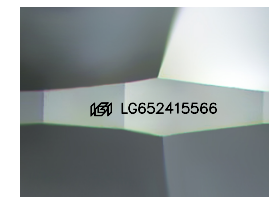
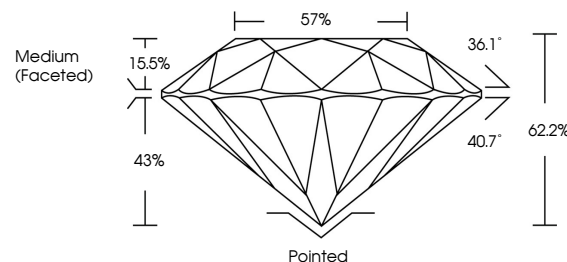
LG652415566 Report verification at igi.org



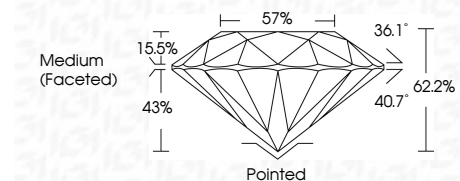
September 11, 2024 IGI Report Number LG652415566 Description LABORATORY GROWN DIAMOND Shape and Cutting Style ROUND BRILLIANT Measurements 6.48 - 6.51 X 4.04 MM GRADING RESULTS Carat Weight 1.06 CARAT Color Grade D Clarity Grade VVS 1 Cut Grade IDEAL

September 11, 2024 IGI Report Number LG652415566 Description LABORATORY GROWN DIAMOND Shape and Cutting Style ROUND BRILLIANT Measurements 6.48 - 6.51 X 4.04 MM

PROPORTIONS



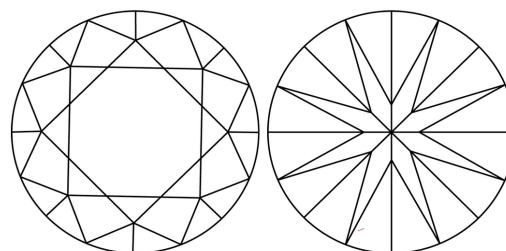
Sample Image Used



GRADING RESULTS

Carat Weight 1.06 CARAT Color Grade D Clarity Grade VVS 1 Cut Grade IDEAL

CLARITY CHARACTERISTICS



KEY TO SYMBOLS

Red symbols indicate internal characteristics. Green symbols indicate external characteristics.

COLOR

D E F G H I J Faint Very Light Light

CLARITY

IF VVS 1-2 VS 1-2 SI 1-2 I 1-3 Internally Flawless Very Very Slightly Included Very Slightly Included Slightly Included Included

ADDITIONAL GRADING INFORMATION

Polish EXCELLENT Symmetry EXCELLENT Fluorescence NONE Inscription(s) IGI LG652415566 Comments: As Grown - No indication of post-growth treatment. This Laboratory Grown Diamond was created by High Pressure High Temperature (HPHT) growth process. Type II

ADDITIONAL GRADING INFORMATION

Polish EXCELLENT Symmetry EXCELLENT Fluorescence NONE Inscription(s) IGI LG652415566

Comments: As Grown - No indication of post-growth treatment. This Laboratory Grown Diamond was created by High Pressure High Temperature (HPHT) growth process. Type II



IGI

September 11, 2024 IGI Report No LG652415566 ROUND BRILLIANT 6.48 - 6.51 X 4.04 MM 1.06 CARAT D VVS 1 IDEAL 62.2% 57% Medium (Faceted) Pointed EXCELLENT EXCELLENT NONE IGI LG652415566 Comments: As Grown - No indication of post-growth treatment. This Laboratory Grown Diamond was created by High Pressure High Temperature (HPHT) growth process. Type II