



ELECTRONIC COPY

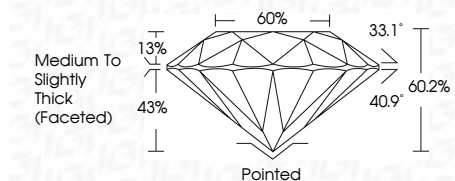
LG652418811
Report verification at igi.org



September 12, 2024
IGI Report Number LG652418811
Description LABORATORY GROWN DIAMOND
Shape and Cutting Style ROUND BRILLIANT
Measurements 6.77 - 6.79 X 4.08 MM

GRADING RESULTS

Carat Weight 1.15 CARAT
Color Grade F
Clarity Grade VS 1
Cut Grade IDEAL



ADDITIONAL GRADING INFORMATION

Polish EXCELLENT
Symmetry EXCELLENT
Fluorescence NONE
Inscription(s) IGI LG652418811
Comments: This Laboratory Grown Diamond was created by Chemical Vapor Deposition (CVD) growth process. Type IIa



September 12, 2024
IGI Report No. LG652418811
ROUND BRILLIANT
6.77 - 6.79 X 4.08 MM
1.15 CARAT
F
VS 1
IDEAL
60.2%
60%
Medium To Slightly Thick (Faceted)
Pointed
EXCELLENT
EXCELLENT
NONE
IGI LG652418811
Comments: This Laboratory Grown Diamond was created by Chemical Vapor Deposition (CVD) growth process. Type IIa

September 12, 2024
IGI Report Number LG652418811
Description LABORATORY GROWN DIAMOND
Shape and Cutting Style ROUND BRILLIANT
Measurements 6.77 - 6.79 X 4.08 MM

GRADING RESULTS

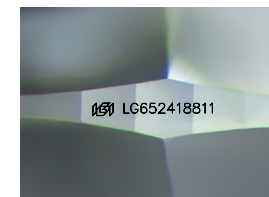
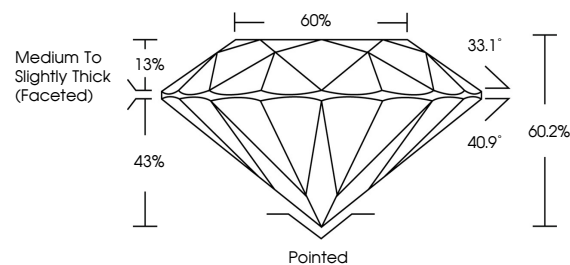
Carat Weight 1.15 CARAT
Color Grade F
Clarity Grade VS 1
Cut Grade IDEAL

ADDITIONAL GRADING INFORMATION

Polish EXCELLENT
Symmetry EXCELLENT
Fluorescence NONE
Inscription(s) IGI LG652418811

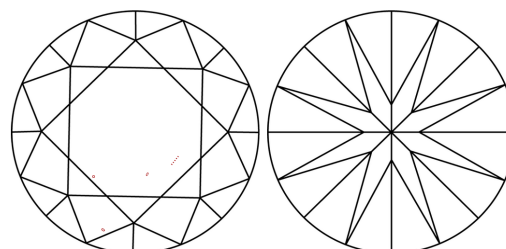
Comments: This Laboratory Grown Diamond was created by Chemical Vapor Deposition (CVD) growth process. Type IIa

PROPORTIONS



Sample Image Used

CLARITY CHARACTERISTICS



KEY TO SYMBOLS

Red symbols indicate internal characteristics.
Green symbols indicate external characteristics.

COLOR

D E F G H I J Faint Very Light Light

CLARITY

IF VS 1-2 VS 1-2 SI 1-2 I 1-3
Internally Flawless Very Very Slightly Included Very Slightly Included Slightly Included Included

