



INTERNATIONAL GEMOLOGICAL INSTITUTE

ELECTRONIC COPY

LG652420149

LABORATORY GROWN DIAMOND REPORT

September 11, 2024

IGI Report Number

LG652420149

Description

LABORATORY GROWN DIAMOND

Shape and Cutting Style

CUT CORNERED RECTANGULAR MODIFIED
BRILLIANT

Measurements

7.12 X 4.93 X 3.26 MM

GRADING RESULTS

Carat Weight

0.99 CARAT

Color Grade

E

Clarity Grade

SI 1

ADDITIONAL GRADING INFORMATION

Polish

EXCELLENT

Symmetry

EXCELLENT

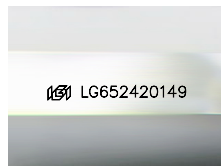
Fluorescence

NONE

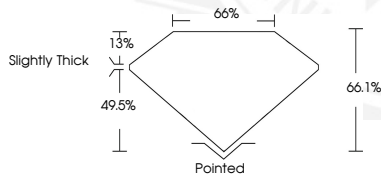
Inscription(s)

IGI LG652420149

Comments: This Laboratory Grown Diamond was created by
Chemical Vapor Deposition (CVD) growth process.
Type IIa



Sample Image Used



September 11, 2024

IGI Report Number LG652420149

CUT CORNERED RECTANGULAR
MODIFIED BRILLIANT

LABORATORY GROWN DIAMOND

7.12 X 4.93 X 3.26 MM

Carat Weight 0.99 CARAT

Color Grade E

Clarity Grade SI 1

Polish EXCELLENT

Symmetry EXCELLENT

Fluorescence NONE

Inscription(s) IGI LG652420149

Comments: This Laboratory Grown
Diamond was created by
Chemical Vapor Deposition (CVD)
growth process. Type IIa



September 11, 2024

IGI Report Number LG652420149

CUT CORNERED RECTANGULAR
MODIFIED BRILLIANT

LABORATORY GROWN DIAMOND

7.12 X 4.93 X 3.26 MM

Carat Weight 0.99 CARAT

Color Grade E

Clarity Grade SI 1

Polish EXCELLENT

Symmetry EXCELLENT

Fluorescence NONE

Inscription(s) IGI LG652420149

Comments: This Laboratory Grown
Diamond was created by
Chemical Vapor Deposition (CVD)
growth process. Type IIa



THIS DOCUMENT WAS PRODUCED WITH THE FOLLOWING SECURITY MEASURES: SPECIAL DOCUMENT PAPER, INK SCREENS, WATERMARK,
BACKGROUND DESIGNS, HOLOGRAM AND OTHER SECURITY FEATURES NOT LISTED AND DO EXCEED DOCUMENT SECURITY INDUSTRY GUIDELINES.

For terms & conditions and to verify this report, please visit www.igi.org