



**ELECTRONIC COPY**

LG652420557  
Report verification at igi.org



September 14, 2024

IGI Report Number **LG652420557**

Description **LABORATORY GROWN DIAMOND**

Shape and Cutting Style **PRINCESS CUT**

Measurements **6.02 X 5.82 X 4.21 MM**

**GRADING RESULTS**

Carat Weight **1.31 CARAT**

Color Grade **E**

Clarity Grade **VVS 2**

September 14, 2024  
IGI Report Number **LG652420557**  
Description **LABORATORY GROWN DIAMOND**  
Shape and Cutting Style **PRINCESS CUT**  
Measurements **6.02 X 5.82 X 4.21 MM**

**GRADING RESULTS**

Carat Weight **1.31 CARAT**

Color Grade **E**

Clarity Grade **VVS 2**

**ADDITIONAL GRADING INFORMATION**

Polish **EXCELLENT**

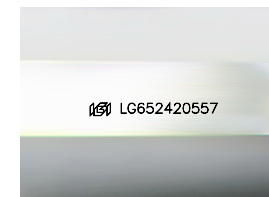
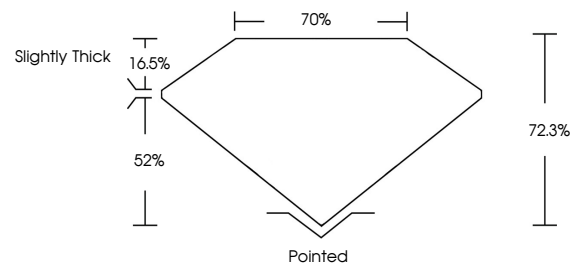
Symmetry **EXCELLENT**

Fluorescence **NONE**

Inscription(s) **IGI LG652420557**

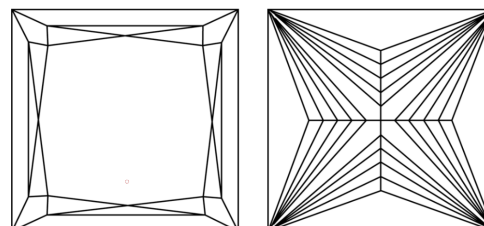
Comments: This Laboratory Grown Diamond was created by Chemical Vapor Deposition (CVD) growth process.  
Type IIa

**PROPORTIONS**



Sample Image Used

**CLARITY CHARACTERISTICS**



**KEY TO SYMBOLS**

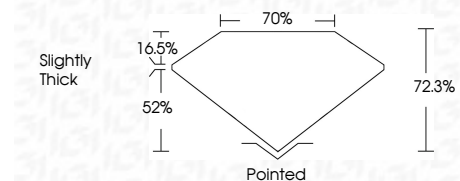
Red symbols indicate internal characteristics.  
Green symbols indicate external characteristics.

**COLOR**

D E F G H I J Faint Very Light Light

**CLARITY**

IF	VS <sup>1-2</sup>	VS <sup>1-2</sup>	SI <sup>1-2</sup>	I <sup>1-3</sup>
Internally Flawless	Very Very Slightly Included	Very Slightly Included	Slightly Included	Included



**ADDITIONAL GRADING INFORMATION**

Polish **EXCELLENT**

Symmetry **EXCELLENT**

Fluorescence **NONE**

Inscription(s) **IGI LG652420557**

Comments: This Laboratory Grown Diamond was created by Chemical Vapor Deposition (CVD) growth process.  
Type IIa



**IGI**



September 14, 2024  
IGI Report No. LG652420557  
**PRINCESS CUT**

6.02 X 5.82 X 4.21 MM

1.31 CARAT  
E

VVS 2  
72.3%  
70%

Slightly Thick

Pointed  
EXCELLENT  
EXCELLENT  
NONE  
IGI LG652420557

Comments: This Laboratory Grown Diamond was created by Chemical Vapor Deposition (CVD) growth process.  
Type IIa