



ELECTRONIC COPY

LG652420559
Report verification at igi.org



September 14, 2024

IGI Report Number **LG652420559**

Description **LABORATORY GROWN DIAMOND**

Shape and Cutting Style **PRINCESS CUT**

Measurements **5.59 X 5.43 X 3.90 MM**

GRADING RESULTS

Carat Weight **1.11 CARAT**

Color Grade **D**

Clarity Grade **VVS 1**

September 14, 2024
IGI Report Number **LG652420559**
Description **LABORATORY GROWN DIAMOND**
Shape and Cutting Style **PRINCESS CUT**
Measurements **5.59 X 5.43 X 3.90 MM**

GRADING RESULTS

Carat Weight **1.11 CARAT**

Color Grade **D**

Clarity Grade **VVS 1**

ADDITIONAL GRADING INFORMATION

Polish **EXCELLENT**

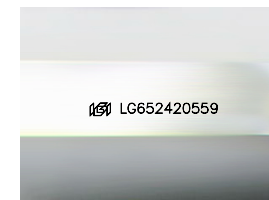
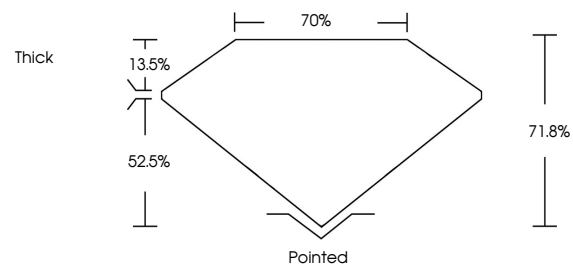
Symmetry **EXCELLENT**

Fluorescence **NONE**

Inscription(s) **IGI LG652420559**

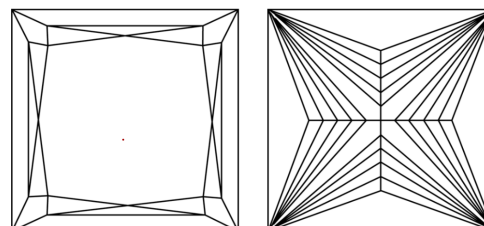
Comments: This Laboratory Grown Diamond was created by Chemical Vapor Deposition (CVD) growth process.
Type IIa

PROPORTIONS



Sample Image Used

CLARITY CHARACTERISTICS



KEY TO SYMBOLS

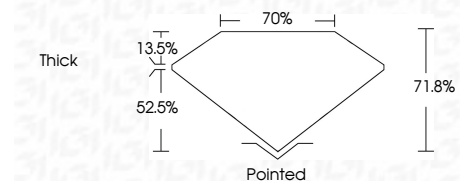
Red symbols indicate internal characteristics.
Green symbols indicate external characteristics.

COLOR

D E F G H I J Faint Very Light Light

CLARITY

IF	VS ¹⁻²	VS ¹⁻²	SI ¹⁻²	I ¹⁻³
Internally Flawless	Very Very Slightly Included	Very Slightly Included	Slightly Included	Included



ADDITIONAL GRADING INFORMATION

Polish **EXCELLENT**

Symmetry **EXCELLENT**

Fluorescence **NONE**

Inscription(s) **IGI LG652420559**

Comments: This Laboratory Grown Diamond was created by Chemical Vapor Deposition (CVD) growth process.
Type IIa



IGI



September 14, 2024
IGI Report No. LG652420559
PRINCESS CUT
1.11 CARAT
D
5.59 X 5.43 X 3.90 MM
Color Grade
Clarity Grade
Depth
Table
Girdle
Thick
Pointed
EXCELLENT
EXCELLENT
NONE
IGI LG652420559
Comments: This Laboratory Grown Diamond was created by Chemical Vapor Deposition (CVD) growth process.
Type IIa