



ELECTRONIC COPY

LG652421852
Report verification at igi.org



September 16, 2024

IGI Report Number **LG652421852**

Description **LABORATORY GROWN DIAMOND**

Shape and Cutting Style **ROUND BRILLIANT**

Measurements **6.74 - 6.78 X 4.12 MM**

GRADING RESULTS

Carat Weight **1.16 CARAT**

Color Grade **E**

Clarity Grade **SI 1**

Cut Grade **IDEAL**

September 16, 2024
IGI Report Number **LG652421852**
Description **LABORATORY GROWN DIAMOND**
Shape and Cutting Style **ROUND BRILLIANT**
Measurements **6.74 - 6.78 X 4.12 MM**

GRADING RESULTS

Carat Weight **1.16 CARAT**

Color Grade **E**

Clarity Grade **SI 1**

Cut Grade **IDEAL**

ADDITIONAL GRADING INFORMATION

Polish **EXCELLENT**

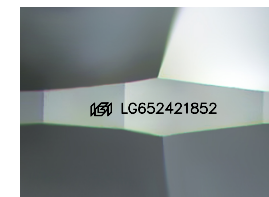
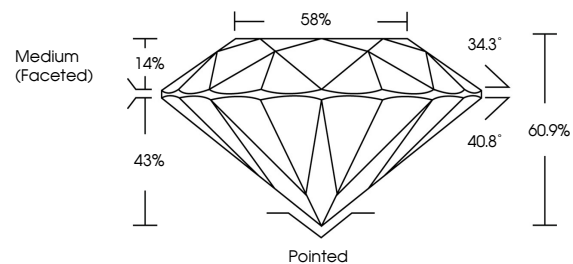
Symmetry **EXCELLENT**

Fluorescence **NONE**

Inscription(s) **IGI LG652421852**

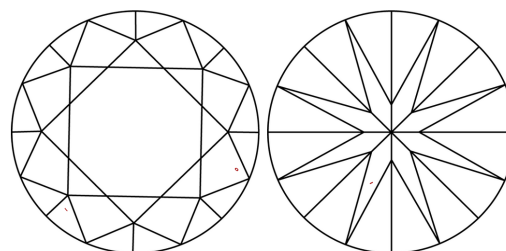
Comments: This Laboratory Grown Diamond was created by Chemical Vapor Deposition (CVD) growth process.
Type IIa

PROPORTIONS



Sample Image Used

CLARITY CHARACTERISTICS



KEY TO SYMBOLS

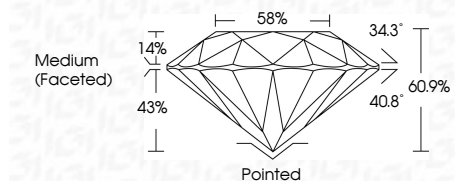
Red symbols indicate internal characteristics.
Green symbols indicate external characteristics.

COLOR

D E F G H I J Faint Very Light Light

CLARITY

IF	VS ¹⁻²	VS ¹⁻²	SI ¹⁻²	I ¹⁻³
Internally Flawless	Very Very Slightly Included	Very Slightly Included	Slightly Included	Included



ADDITIONAL GRADING INFORMATION

Polish **EXCELLENT**

Symmetry **EXCELLENT**

Fluorescence **NONE**

Inscription(s) **IGI LG652421852**

Comments: This Laboratory Grown Diamond was created by Chemical Vapor Deposition (CVD) growth process.
Type IIa



IGI



September 16, 2024	IGI Report No LG652421852	ROUND BRILLIANT	6.74 - 6.78 X 4.12 MM	1.16 CARAT	E	SI 1	IDEAL	60.9%	88%	Medium (Faceted)	Pointed	EXCELLENT	EXCELLENT	NONE	IGI LG652421852
Cutter	Polish	Symmetry	Fluorescence	Inscription(s)	Cut Grade	Color Grade	Clarity Grade	Depth	Table	Girdle					

Comments: This Laboratory Grown Diamond was created by Chemical Vapor Deposition (CVD) growth process.
Type IIa