



**ELECTRONIC COPY**

LG652423190  
Report verification at igi.org



September 13, 2024

IGI Report Number **LG652423190**

Description **LABORATORY GROWN DIAMOND**

Shape and Cutting Style **ROUND BRILLIANT**

Measurements **7.52 - 7.57 X 4.47 MM**

**GRADING RESULTS**

Carat Weight **1.55 CARAT**

Color Grade **FANCY PINK**

Clarity Grade **SI 1**

Cut Grade **EXCELLENT**

September 13, 2024  
IGI Report Number **LG652423190**  
Description **LABORATORY GROWN DIAMOND**  
Shape and Cutting Style **ROUND BRILLIANT**  
Measurements **7.52 - 7.57 X 4.47 MM**

**GRADING RESULTS**

Carat Weight **1.55 CARAT**

Color Grade **FANCY PINK**

Clarity Grade **SI 1**

Cut Grade **EXCELLENT**

**ADDITIONAL GRADING INFORMATION**

Polish **EXCELLENT**

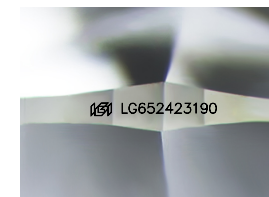
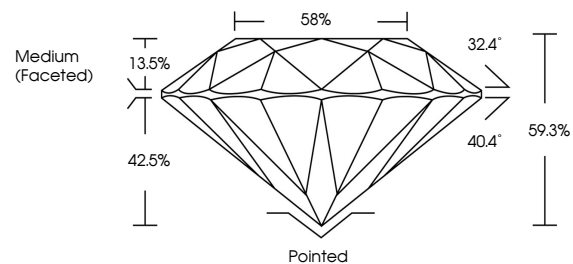
Symmetry **EXCELLENT**

Fluorescence **SLIGHT**

Inscription(s) **IGI LG652423190**

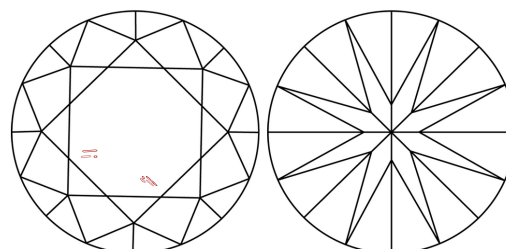
Comments: This Laboratory Grown Diamond was created by High Pressure High Temperature (HPHT) growth process. Indications of post-growth treatment.

**PROPORTIONS**



Sample Image Used

**CLARITY CHARACTERISTICS**



**KEY TO SYMBOLS**

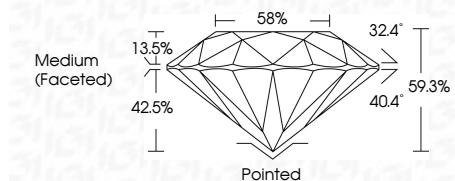
Red symbols indicate internal characteristics.  
Green symbols indicate external characteristics.

**COLOR**

D E F G H I J Faint Very Light Light

**CLARITY**

|                     |                             |                        |                   |                  |
|---------------------|-----------------------------|------------------------|-------------------|------------------|
| IF                  | VS <sup>1-2</sup>           | VS <sup>1-2</sup>      | SI <sup>1-2</sup> | I <sup>1-3</sup> |
| Internally Flawless | Very Very Slightly Included | Very Slightly Included | Slightly Included | Included         |



**ADDITIONAL GRADING INFORMATION**

Polish **EXCELLENT**

Symmetry **EXCELLENT**

Fluorescence **SLIGHT**

Inscription(s) **IGI LG652423190**

Comments: This Laboratory Grown Diamond was created by High Pressure High Temperature (HPHT) growth process. Indications of post-growth treatment.



**IGI**



|                           |                  |           |
|---------------------------|------------------|-----------|
| September 13, 2024        | 1.55 CARAT       | Pointed   |
| IGI Report No LG652423190 | FANCY PINK       | EXCELLENT |
| ROUND BRILLIANT           | SI 1             | EXCELLENT |
| 7.52 - 7.57 X 4.47 MM     | EXCELLENT        | SLIGHT    |
| Color Grade               | 59.3%            | SLIGHT    |
| Clarity Grade             | 58%              | SLIGHT    |
| Depth                     | Medium (Faceted) | SLIGHT    |
| Table                     |                  | SLIGHT    |
| Girdle                    |                  | SLIGHT    |
| Culet                     |                  | SLIGHT    |
| Polish                    |                  | SLIGHT    |
| Symmetry                  |                  | SLIGHT    |
| Fluorescence              |                  | SLIGHT    |
| Inscription(s)            |                  | SLIGHT    |

Comments: This Laboratory Grown Diamond was created by High Pressure High Temperature (HPHT) growth process. Indications of post-growth treatment.