



ELECTRONIC COPY

LG652423495
Report verification at igi.org



September 12, 2024

IGI Report Number **LG652423495**

Description **LABORATORY GROWN DIAMOND**

Shape and Cutting Style **EMERALD CUT**

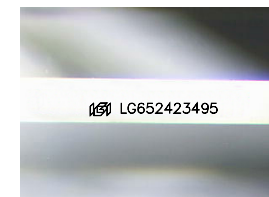
Measurements **8.74 X 5.99 X 4.01 MM**

GRADING RESULTS

Carat Weight **2.03 CARATS**

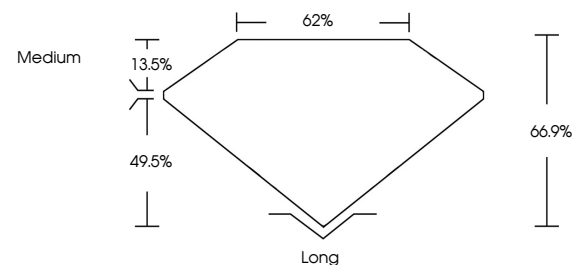
Color Grade **D**

Clarity Grade **VVS 2**

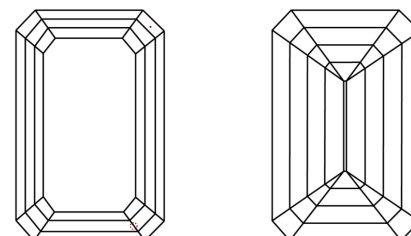


Sample Image Used

PROPORTIONS



CLARITY CHARACTERISTICS



KEY TO SYMBOLS

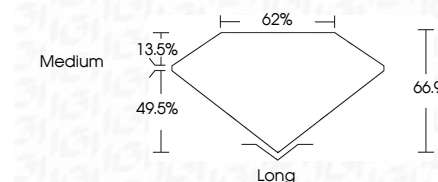
Red symbols indicate internal characteristics.
Green symbols indicate external characteristics.

COLOR

D E F G H I J Faint Very Light Light

CLARITY

IF	VS ¹⁻²	VS ¹⁻²	SI ¹⁻²	I ¹⁻³
Internally Flawless	Very Very Slightly Included	Very Slightly Included	Slightly Included	Included



ADDITIONAL GRADING INFORMATION

Polish **EXCELLENT**

Symmetry **EXCELLENT**

Fluorescence **NONE**

Inscription(s) **IGI LG652423495**

Comments: As Grown - No indication of post-growth treatment.

This Laboratory Grown Diamond was created by High Pressure High Temperature (HPHT) growth process.

Type II



IGI

September 12, 2024
IGI Report No LG652423495
EMERALD CUT

2.03 CARATS
D

8.74 X 5.99 X 4.01 MM

Carat Weight
Color Grade
Clarity Grade
Depth
Table
Girdle
Medium
Long
EXCELLENT
EXCELLENT
NONE
IGI LG652423495

Comments: As Grown - No indication of post-growth treatment.
This Laboratory Grown Diamond was created by High Pressure High Temperature (HPHT) growth process.
Type II