



ELECTRONIC COPY

LG652425282
Report verification at igi.org



September 17, 2024

IGI Report Number **LG652425282**

Description **LABORATORY GROWN DIAMOND**

Shape and Cutting Style **ROUND BRILLIANT**

Measurements **6.60 - 6.62 X 4.00 MM**

GRADING RESULTS

Carat Weight **1.05 CARAT**

Color Grade **FANCY PINK**

Clarity Grade **VVS 2**

Cut Grade **IDEAL**

September 17, 2024
IGI Report Number **LG652425282**
Description **LABORATORY GROWN DIAMOND**
Shape and Cutting Style **ROUND BRILLIANT**
Measurements **6.60 - 6.62 X 4.00 MM**

GRADING RESULTS

Carat Weight **1.05 CARAT**

Color Grade **FANCY PINK**

Clarity Grade **VVS 2**

Cut Grade **IDEAL**

ADDITIONAL GRADING INFORMATION

Polish **EXCELLENT**

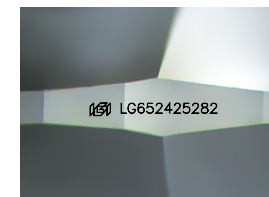
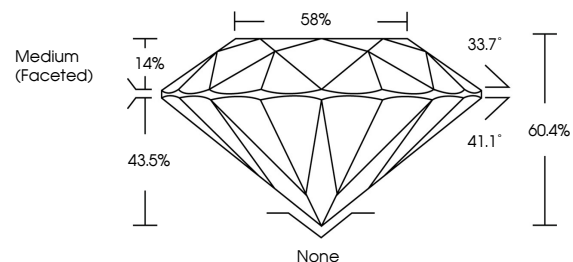
Symmetry **EXCELLENT**

Fluorescence **SLIGHT**

Inscription(s) **LG652425282**

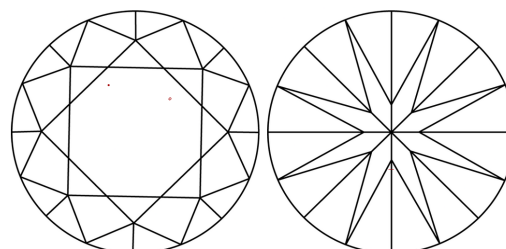
Comments: This Laboratory Grown Diamond was created by Chemical Vapor Deposition (CVD) growth process.
Indications of post-growth treatment.

PROPORTIONS



Sample Image Used

CLARITY CHARACTERISTICS



KEY TO SYMBOLS

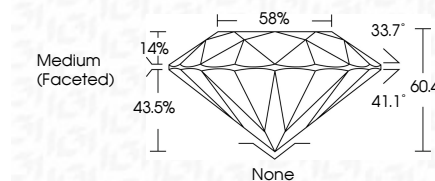
Red symbols indicate internal characteristics.
Green symbols indicate external characteristics.

COLOR

D E F G H I J Faint Very Light Light

CLARITY

IF	VS ¹⁻²	VS ¹⁻²	SI ¹⁻²	I ¹⁻³
Internally Flawless	Very Very Slightly Included	Very Slightly Included	Slightly Included	Included



ADDITIONAL GRADING INFORMATION

Polish **EXCELLENT**

Symmetry **EXCELLENT**

Fluorescence **SLIGHT**

Inscription(s) **LG652425282**

Comments: This Laboratory Grown Diamond was created by Chemical Vapor Deposition (CVD) growth process.
Indications of post-growth treatment.



IGI



September 17, 2024	1.05 CARAT	None	None
IGI Report No LG652425282	FANCY PINK	EXCELLENT	EXCELLENT
ROUND BRILLIANT	VVS 2	EXCELLENT	EXCELLENT
6.60 - 6.62 X 4.00 MM	IDEAL	SLIGHT	SLIGHT
Color Grade	60.4%	None	None
Clarity Grade	58%	None	None
Cut Grade	Medium (Faceted)	None	None
Depth	IGI LG652425282	None	None
Table		None	None
Girdle		None	None
Polish		None	None
Symmetry		None	None
Fluorescence		None	None
Inscription(s)		None	None

Comments: This Laboratory Grown Diamond was created by Chemical Vapor Deposition (CVD) growth process.
Indications of post-growth treatment.