



ELECTRONIC COPY

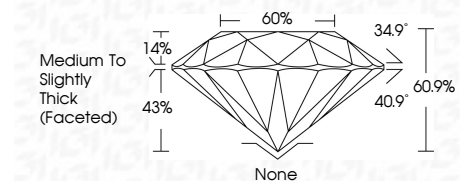
LG652425326 Report verification at igi.org



September 16, 2024 IGI Report Number LG652425326 Description LABORATORY GROWN DIAMOND Shape and Cutting Style ROUND BRILLIANT Measurements 6.59 - 6.62 X 4.03 MM

GRADING RESULTS

Carat Weight 1.09 CARAT Color Grade FANCY PINK Clarity Grade VS 1 Cut Grade IDEAL



ADDITIONAL GRADING INFORMATION

Polish EXCELLENT Symmetry EXCELLENT Fluorescence SLIGHT Inscription(s) IGI LG652425326

Comments: This Laboratory Grown Diamond was created by Chemical Vapor Deposition (CVD) growth process. Indications of post-growth treatment.



September 16, 2024 IGI Report No. LG652425326 ROUND BRILLIANT 1.09 CARAT FANCY PINK VS 1 IDEAL 60% 60% Medium To Slightly Thick (Faceted) None EXCELLENT EXCELLENT SLIGHT SLIGHT IGI LG652425326

Comments: This Laboratory Grown Diamond was created by Chemical Vapor Deposition (CVD) growth process. Indications of post-growth treatment.

September 16, 2024 IGI Report Number LG652425326 Description LABORATORY GROWN DIAMOND Shape and Cutting Style ROUND BRILLIANT Measurements 6.59 - 6.62 X 4.03 MM

GRADING RESULTS

Carat Weight 1.09 CARAT Color Grade FANCY PINK Clarity Grade VS 1 Cut Grade IDEAL

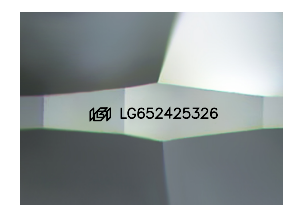
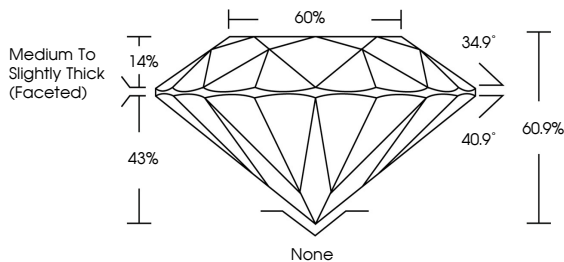
ADDITIONAL GRADING INFORMATION

Polish EXCELLENT Symmetry EXCELLENT Fluorescence SLIGHT

Inscription(s) IGI LG652425326

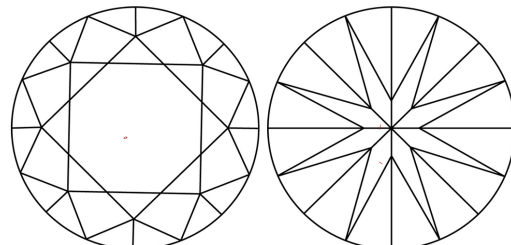
Comments: This Laboratory Grown Diamond was created by Chemical Vapor Deposition (CVD) growth process. Indications of post-growth treatment.

PROPORTIONS



Sample Image Used

CLARITY CHARACTERISTICS



KEY TO SYMBOLS

Red symbols indicate internal characteristics. Green symbols indicate external characteristics.

COLOR

D E F G H I J Faint Very Light Light

CLARITY

IF VS 1-2 VS 1-2 SI 1-2 I 1-3 Internally Flawless Very Very Slightly Included Very Slightly Included Slightly Included Included



THIS DOCUMENT WAS PRODUCED WITH THE FOLLOWING SECURITY MEASURES: SPECIAL DOCUMENT PAPER, INK SCREENS, WATERMARK BACKGROUND DESIGNS, HOLOGRAM AND OTHER SECURITY FEATURES NOT LISTED AND DO EXCEED DOCUMENT SECURITY INDUSTRY GUIDELINES.