



ELECTRONIC COPY

LABORATORY GROWN DIAMOND REPORT

September 12, 2024
IGI Report Number LG652427739
Description LABORATORY GROWN DIAMOND
Shape and Cutting Style PRINCESS CUT
Measurements 7.04 X 6.93 X 4.92 MM

GRADING RESULTS

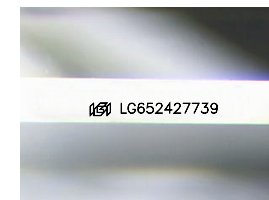
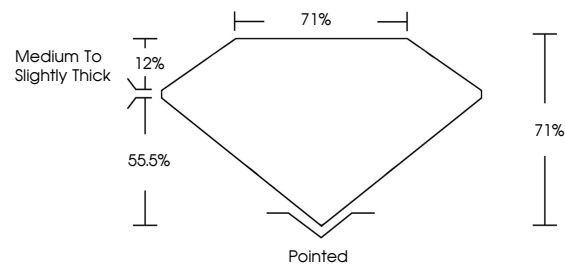
Carat Weight 2.06 CARATS
Color Grade F
Clarity Grade VS 1

ADDITIONAL GRADING INFORMATION

Polish EXCELLENT
Symmetry EXCELLENT
Fluorescence NONE
Inscription(s) IGI LG652427739

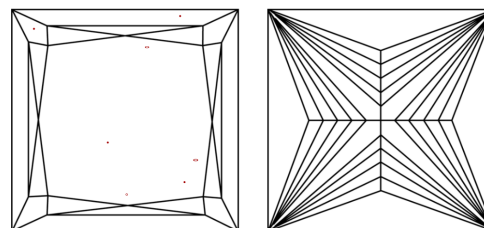
Comments: This Laboratory Grown Diamond was created by Chemical Vapor Deposition (CVD) growth process. Type IIa

PROPORTIONS



Sample Image Used

CLARITY CHARACTERISTICS



KEY TO SYMBOLS

Red symbols indicate internal characteristics.
Green symbols indicate external characteristics.

COLOR

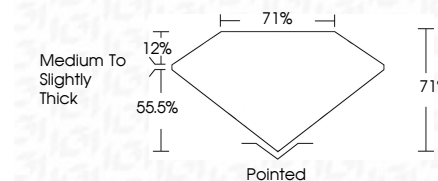
Color scale from D to J, with 'Faint' and 'Very Light' labels.

CLARITY

Clarity scale from IF to I 1-3, with 'Internally Flawless' and 'Very Slightly Included' labels.



September 12, 2024
IGI Report Number LG652427739
Description LABORATORY GROWN DIAMOND
Shape and Cutting Style PRINCESS CUT
Measurements 7.04 X 6.93 X 4.92 MM
GRADING RESULTS
Carat Weight 2.06 CARATS
Color Grade F
Clarity Grade VS 1



ADDITIONAL GRADING INFORMATION

Polish EXCELLENT
Symmetry EXCELLENT
Fluorescence NONE
Inscription(s) IGI LG652427739
Comments: This Laboratory Grown Diamond was created by Chemical Vapor Deposition (CVD) growth process. Type IIa



IGI



September 12, 2024
IGI Report No. LG652427739
PRINCESS CUT
2.06 CARATS F
7.04 X 6.93 X 4.92 MM
Carat Weight
Color Grade
Clarity Grade VS 1
Depth 71%
Table 71%
Girdle Medium to Slightly Thick
Culet Pointed
Polish EXCELLENT
Symmetry EXCELLENT
Fluorescence NONE
Inscription(s) IGI LG652427739
Comments: This Laboratory Grown Diamond was created by Chemical Vapor Deposition (CVD) growth process. Type IIa