



ELECTRONIC COPY

LG652428817
Report verification at igi.org



September 13, 2024

IGI Report Number **LG652428817**

Description **LABORATORY GROWN DIAMOND**

Shape and Cutting Style **CUT CORNERED
RECTANGULAR MODIFIED
BRILLIANT**

Measurements **8.72 X 6.20 X 4.09 MM**

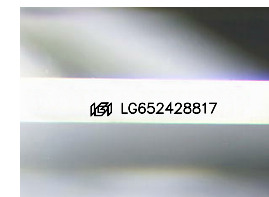
GRADING RESULTS

Carat Weight **2.01 CARATS**

Color Grade **F**

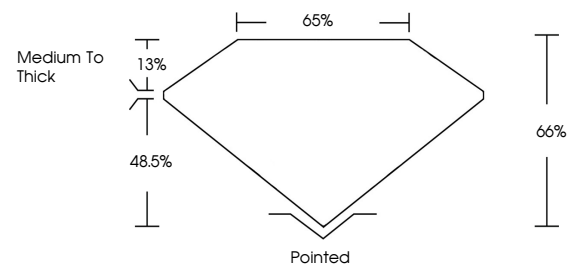
Clarity Grade **VVS 1**

Cut Grade **EXCELLENT**

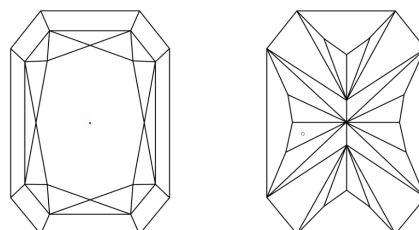


Sample Image Used

PROPORTIONS



CLARITY CHARACTERISTICS



KEY TO SYMBOLS

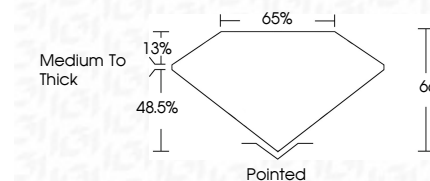
Red symbols indicate internal characteristics.
Green symbols indicate external characteristics.

COLOR

D E F G H I J Faint Very Light Light

CLARITY

IF	VS ¹⁻²	VS ¹⁻²	SI ¹⁻²	I ¹⁻³
Internally Flawless	Very Very Slightly Included	Very Slightly Included	Slightly Included	Included



ADDITIONAL GRADING INFORMATION

Polish **EXCELLENT**

Symmetry **EXCELLENT**

Fluorescence **NONE**

Inscription(s) **IGI LG652428817**

Comments: This Laboratory Grown Diamond was created by Chemical Vapor Deposition (CVD) growth process. Type IIa



IGI



September 13, 2024	IGI Report No. LG652428817	CUT CORNERED RECT. MODIFIED BRILLIANT	2.01 CARATS	F	VVS 1	EXCELLENT	65%	65%	Medium To Thick	Pointed	EXCELLENT	EXCELLENT	NONE	IGI LG652428817
IGI	Color Grade	Clarity Grade	Depth	Table	Girdle	Culet	Polish	Symmetry	Fluorescence	Inscription(s)	Comments: This Laboratory Grown Diamond was created by Chemical Vapor Deposition (CVD) growth process. Type IIa			