



ELECTRONIC COPY

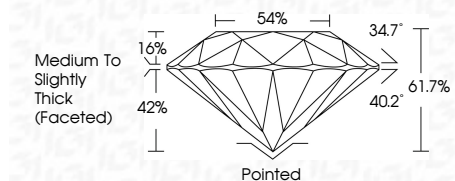
LG652429017 Report verification at igi.org



September 13, 2024 IGI Report Number LG652429017 Description LABORATORY GROWN DIAMOND Shape and Cutting Style ROUND BRILLIANT Measurements 7.31 - 7.36 X 4.53 MM

GRADING RESULTS

Carat Weight 1.50 CARAT Color Grade E Clarity Grade VVS 2 Cut Grade IDEAL



ADDITIONAL GRADING INFORMATION

Polish EXCELLENT Symmetry EXCELLENT Fluorescence NONE Inscription(s) IGI LG652429017 Comments: This Laboratory Grown Diamond was created by Chemical Vapor Deposition (CVD) growth process. Type IIa



September 13, 2024 IGI Report No. LG652429017 ROUND BRILLIANT 1.50 CARAT E VVS 2 IDEAL 61.7% 54% Medium To Slightly Thick (Faceted) Pointed EXCELLENT EXCELLENT NONE IGI LG652429017

Comments: This Laboratory Grown Diamond was created by Chemical Vapor Deposition (CVD) growth process. Type IIa

September 13, 2024 IGI Report Number LG652429017 Description LABORATORY GROWN DIAMOND Shape and Cutting Style ROUND BRILLIANT Measurements 7.31 - 7.36 X 4.53 MM

GRADING RESULTS

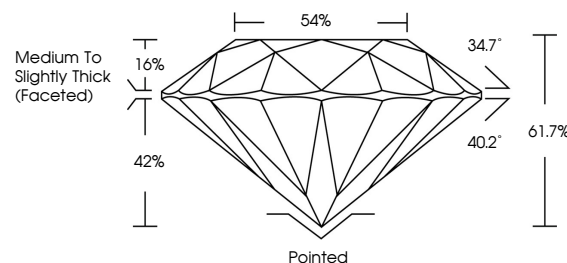
Carat Weight 1.50 CARAT Color Grade E Clarity Grade VVS 2 Cut Grade IDEAL

ADDITIONAL GRADING INFORMATION

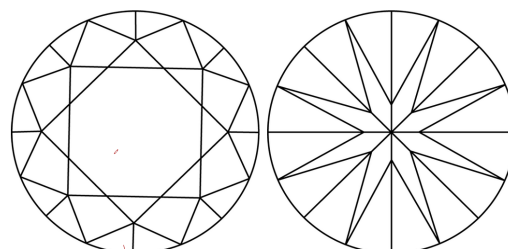
Polish EXCELLENT Symmetry EXCELLENT Fluorescence NONE Inscription(s) IGI LG652429017

Comments: This Laboratory Grown Diamond was created by Chemical Vapor Deposition (CVD) growth process. Type IIa

PROPORTIONS



CLARITY CHARACTERISTICS



KEY TO SYMBOLS

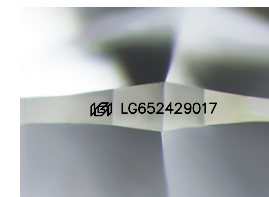
Red symbols indicate internal characteristics. Green symbols indicate external characteristics.

COLOR

D E F G H I J Faint Very Light Light

CLARITY

IF VVS 1-2 VS 1-2 SI 1-2 I 1-3 Internally Flawless Very Very Slightly Included Very Slightly Included Slightly Included Included



Sample Image Used



September 13, 2024 IGI Report No. LG652429017 ROUND BRILLIANT

1.50 CARAT E VVS 2 IDEAL 61.7% 54% Medium To Slightly Thick (Faceted) Pointed EXCELLENT EXCELLENT NONE IGI LG652429017

Comments: This Laboratory Grown Diamond was created by Chemical Vapor Deposition (CVD) growth process. Type IIa