



ELECTRONIC COPY

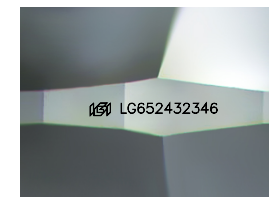
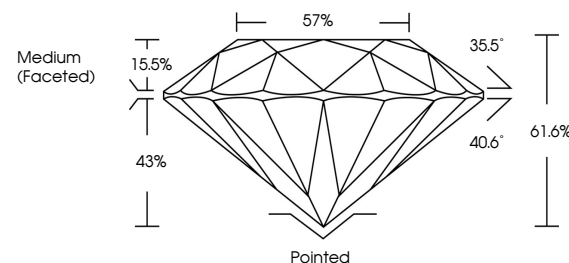
LG652432346 Report verification at igi.org



October 11, 2024 IGI Report Number LG652432346 Description LABORATORY GROWN DIAMOND Shape and Cutting Style ROUND BRILLIANT Measurements 9.40 - 9.48 X 5.82 MM GRADING RESULTS Carat Weight 3.19 CARATS Color Grade D Clarity Grade INTERNALLY FLAWLESS Cut Grade IDEAL

October 11, 2024 IGI Report Number LG652432346 Description LABORATORY GROWN DIAMOND Shape and Cutting Style ROUND BRILLIANT Measurements 9.40 - 9.48 X 5.82 MM

PROPORTIONS

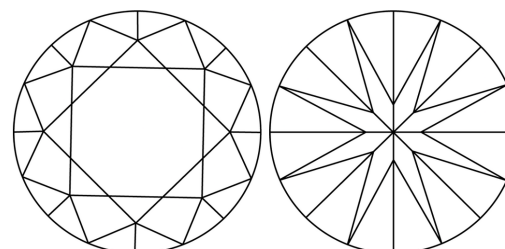


Sample Image Used

GRADING RESULTS

Carat Weight 3.19 CARATS Color Grade D Clarity Grade INTERNALLY FLAWLESS Cut Grade IDEAL

CLARITY CHARACTERISTICS



KEY TO SYMBOLS

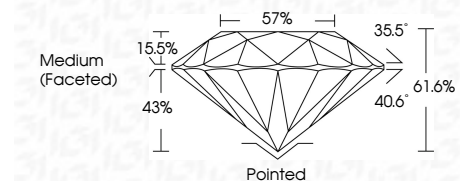
Red symbols indicate internal characteristics. Green symbols indicate external characteristics.

COLOR

D E F G H I J Faint Very Light Light

CLARITY

IF VS 1-2 VS 1-2 SI 1-2 I 1-3 Internally Flawless Very Very Slightly Included Very Slightly Included Slightly Included Included



ADDITIONAL GRADING INFORMATION

Polish EXCELLENT Symmetry EXCELLENT Fluorescence NONE Inscription(s) IGI LG652432346 Comments: As Grown - No indication of post-growth treatment. This Laboratory Grown Diamond was created by High Pressure High Temperature (HPHT) growth process. Type II

ADDITIONAL GRADING INFORMATION

Polish EXCELLENT Symmetry EXCELLENT Fluorescence NONE Inscription(s) IGI LG652432346

Comments: As Grown - No indication of post-growth treatment. This Laboratory Grown Diamond was created by High Pressure High Temperature (HPHT) growth process. Type II



IGI



Table with diamond specifications: October 11, 2024, IGI Report No LG652432346, ROUND BRILLIANT, 9.40 - 9.48 X 5.82 MM, 3.19 CARATS, D, IDEAL, 61.6%, 57%, Medium (Faceted), Pointed, EXCELLENT, EXCELLENT, NONE, IGI LG652432346.

Comments: As Grown - No indication of post-growth treatment. This Laboratory Grown Diamond was created by High Pressure High Temperature (HPHT) growth process. Type II