



ELECTRONIC COPY

LABORATORY GROWN DIAMOND REPORT

September 14, 2024  
IGI Report Number LG652433330  
Description LABORATORY GROWN DIAMOND  
Shape and Cutting Style PRINCESS CUT  
Measurements 7.86 X 7.85 X 5.76 MM

GRADING RESULTS

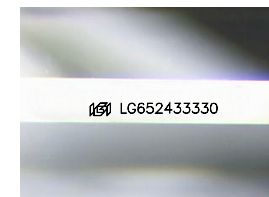
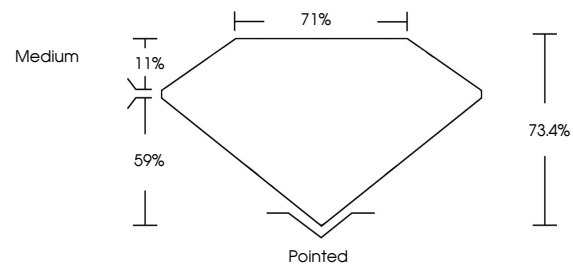
Carat Weight 3.04 CARATS  
Color Grade E  
Clarity Grade VVS 2  
Cut Grade VERY GOOD

ADDITIONAL GRADING INFORMATION

Polish EXCELLENT  
Symmetry EXCELLENT  
Fluorescence NONE  
Inscription(s) IGI LG652433330

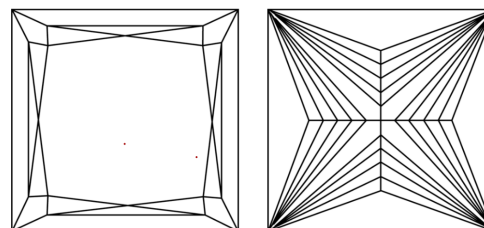
Comments: This Laboratory Grown Diamond was created by Chemical Vapor Deposition (CVD) growth process.  
Type IIa

PROPORTIONS



Sample Image Used

CLARITY CHARACTERISTICS



KEY TO SYMBOLS

Red symbols indicate internal characteristics.  
Green symbols indicate external characteristics.

COLOR

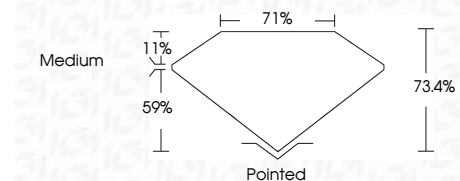
D E F G H I J Faint Very Light Light

CLARITY

IF VS 1-2 VS 1-2 SI 1-2 I 1-3  
Internally Flawless Very Very Slightly Included Very Slightly Included Slightly Included Included



September 14, 2024  
IGI Report Number LG652433330  
Description LABORATORY GROWN DIAMOND  
Shape and Cutting Style PRINCESS CUT  
Measurements 7.86 X 7.85 X 5.76 MM  
GRADING RESULTS  
Carat Weight 3.04 CARATS  
Color Grade E  
Clarity Grade VVS 2  
Cut Grade VERY GOOD



ADDITIONAL GRADING INFORMATION

Polish EXCELLENT  
Symmetry EXCELLENT  
Fluorescence NONE  
Inscription(s) IGI LG652433330  
Comments: This Laboratory Grown Diamond was created by Chemical Vapor Deposition (CVD) growth process.  
Type IIa



IGI



September 14, 2024  
IGI Report No LG652433330  
PRINCESS CUT  
7.86 X 7.85 X 5.76 MM  
3.04 CARATS  
E  
VVS 2  
VERY GOOD  
73.4%  
71%  
Medium  
Pointed  
EXCELLENT  
EXCELLENT  
NONE  
IGI LG652433330  
Comments: This Laboratory Grown Diamond was created by Chemical Vapor Deposition (CVD) growth process.  
Type IIa