



ELECTRONIC COPY

LABORATORY GROWN DIAMOND REPORT

September 14, 2024  
IGI Report Number LG652433740  
Description LABORATORY GROWN DIAMOND  
Shape and Cutting Style CUT CORNERED RECTANGULAR MODIFIED BRILLIANT  
Measurements 9.39 X 6.20 X 4.32 MM

GRADING RESULTS

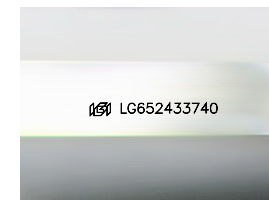
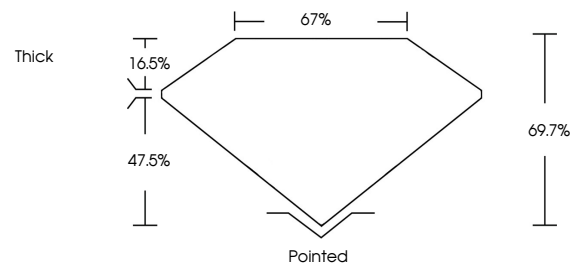
Carat Weight 2.29 CARATS  
Color Grade D  
Clarity Grade VVS 2

ADDITIONAL GRADING INFORMATION

Polish EXCELLENT  
Symmetry EXCELLENT  
Fluorescence NONE  
Inscription(s) LG652433740

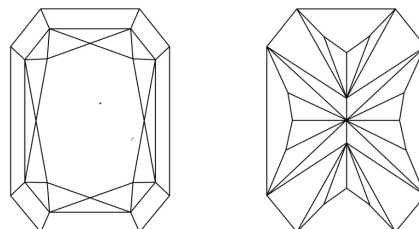
Comments: This Laboratory Grown Diamond was created by Chemical Vapor Deposition (CVD) growth process.  
Type IIa

PROPORTIONS



Sample Image Used

CLARITY CHARACTERISTICS



KEY TO SYMBOLS

Red symbols indicate internal characteristics.  
Green symbols indicate external characteristics.

COLOR

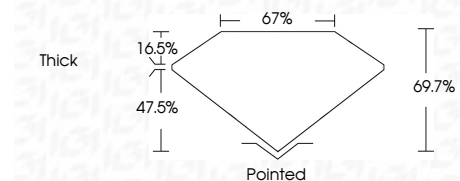
D E F G H I J Faint Very Light Light

CLARITY

IF VVS 1-2 VS 1-2 SI 1-2 I 1-3  
Internally Flawless Very Very Slightly Included Very Slightly Included Slightly Included Included



September 14, 2024  
IGI Report Number LG652433740  
Description LABORATORY GROWN DIAMOND  
Shape and Cutting Style CUT CORNERED RECTANGULAR MODIFIED BRILLIANT  
Measurements 9.39 X 6.20 X 4.32 MM  
GRADING RESULTS  
Carat Weight 2.29 CARATS  
Color Grade D  
Clarity Grade VVS 2



ADDITIONAL GRADING INFORMATION

Polish EXCELLENT  
Symmetry EXCELLENT  
Fluorescence NONE  
Inscription(s) LG652433740  
Comments: This Laboratory Grown Diamond was created by Chemical Vapor Deposition (CVD) growth process.  
Type IIa



September 14, 2024  
IGI Report No LG652433740  
CUT CORNERED RECT. MODIFIED BRILLIANT  
9.39 X 6.20 X 4.32 MM  
2.29 CARATS  
D  
VVS 2  
67%  
67%  
Thick  
Pointed  
EXCELLENT  
EXCELLENT  
NONE  
NONE  
 LG652433740  
Comments: This Laboratory Grown Diamond was created by Chemical Vapor Deposition (CVD) growth process.  
Type IIa