



ELECTRONIC COPY

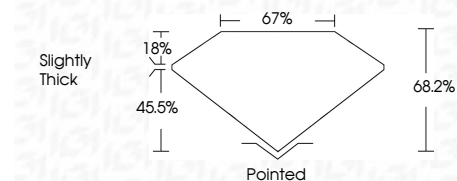
LG652437975
Report verification at igi.org



September 18, 2024
IGI Report Number **LG652437975**
Description **LABORATORY GROWN DIAMOND**
Shape and Cutting Style **CUT CORNERED
RECTANGULAR MODIFIED
BRILLIANT**
Measurements **6.88 X 4.94 X 3.37 MM**

GRADING RESULTS

Carat Weight **1.04 CARAT**
Color Grade **FANCY ORANGE**
Clarity Grade **VS 1**



ADDITIONAL GRADING INFORMATION

Polish **EXCELLENT**
Symmetry **EXCELLENT**
Fluorescence **NONE**
Inscription(s) **IGI LG652437975**
Comments: This Laboratory Grown Diamond was created by Chemical Vapor Deposition (CVD) growth process. Indications of post-growth treatment.



September 18, 2024
IGI Report No. LG652437975
CUT CORNERED RECT. MODIFIED BRILLIANT
6.88 X 4.94 X 3.37 MM
1.04 CARAT
FANCY ORANGE
VS 1
68.2%
18%
Slightly Thick
Pointed
EXCELLENT
EXCELLENT
NONE
IGI LG652437975
Comments: This Laboratory Grown Diamond was created by Chemical Vapor Deposition (CVD) growth process. Indications of post-growth treatment.

LABORATORY GROWN DIAMOND REPORT

September 18, 2024
IGI Report Number **LG652437975**
Description **LABORATORY GROWN DIAMOND**
Shape and Cutting Style **CUT CORNERED RECTANGULAR
MODIFIED BRILLIANT**
Measurements **6.88 X 4.94 X 3.37 MM**

GRADING RESULTS

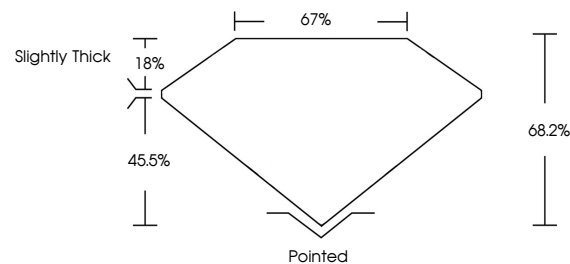
Carat Weight **1.04 CARAT**
Color Grade **FANCY ORANGE**
Clarity Grade **VS 1**

ADDITIONAL GRADING INFORMATION

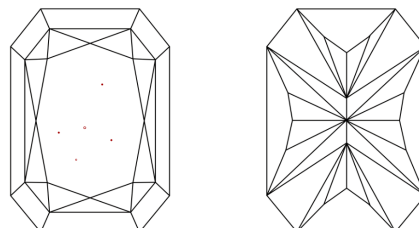
Polish **EXCELLENT**
Symmetry **EXCELLENT**
Fluorescence **NONE**
Inscription(s) **IGI LG652437975**

Comments: This Laboratory Grown Diamond was created by Chemical Vapor Deposition (CVD) growth process. Indications of post-growth treatment.

PROPORTIONS

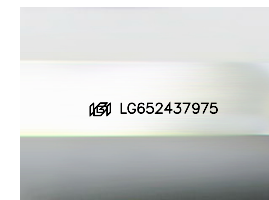


CLARITY CHARACTERISTICS



KEY TO SYMBOLS

Red symbols indicate internal characteristics.
Green symbols indicate external characteristics.



Sample Image Used

COLOR

D E F G H I J Faint Very Light Light

CLARITY

IF	VS 1-2	VS 1-2	SI 1-2	I 1-3
Internally Flawless	Very Very Slightly Included	Very Slightly Included	Slightly Included	Included

