



ELECTRONIC COPY

LG652438750
Report verification at igi.org



September 17, 2024

IGI Report Number **LG652438750**

Description **LABORATORY GROWN DIAMOND**

Shape and Cutting Style **EMERALD CUT**

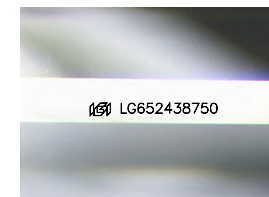
Measurements **8.01 X 5.43 X 3.65 MM**

GRADING RESULTS

Carat Weight **1.57 CARAT**

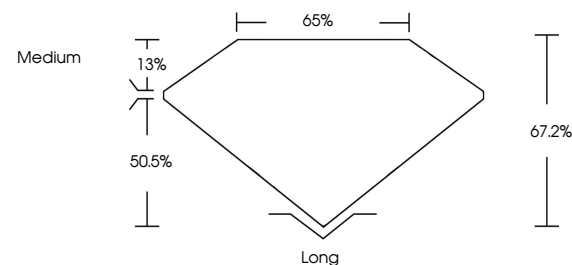
Color Grade **E**

Clarity Grade **VS 1**

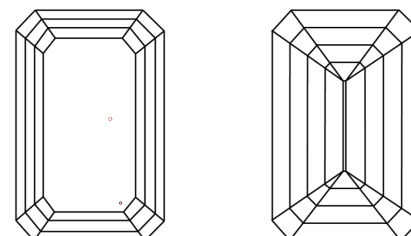


Sample Image Used

PROPORTIONS



CLARITY CHARACTERISTICS



KEY TO SYMBOLS

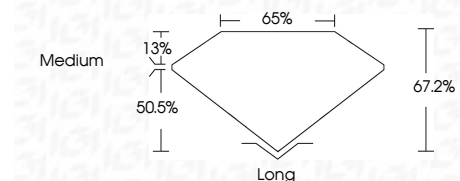
Red symbols indicate internal characteristics.
Green symbols indicate external characteristics.

COLOR

D E F G H I J Faint Very Light Light

CLARITY

IF	VS ¹⁻²	VS ¹⁻²	SI ¹⁻²	I ¹⁻³
Internally Flawless	Very Very Slightly Included	Very Slightly Included	Slightly Included	Included



ADDITIONAL GRADING INFORMATION

Polish **EXCELLENT**

Symmetry **EXCELLENT**

Fluorescence **NONE**

Inscription(s) **IGI LG652438750**

Comments: This Laboratory Grown Diamond was created by Chemical Vapor Deposition (CVD) growth process.
Type IIa



IGI



September 17, 2024
IGI Report No. LG652438750
EMERALD CUT

1.57 CARAT
E

8.01 X 5.43 X 3.65 MM
Color Grade
Depth 50.5%
Table 13%
Girdle
Medium

Long
EXCELLENT
EXCELLENT
NONE
IGI LG652438750

Comments: This Laboratory Grown Diamond was created by Chemical Vapor Deposition (CVD) growth process.
Type IIa