



ELECTRONIC COPY

LG652440879 Report verification at igi.org



September 16, 2024

IGI Report Number LG652440879

Description LABORATORY GROWN DIAMOND

Shape and Cutting Style EMERALD CUT

Measurements 8.60 X 5.99 X 3.98 MM

GRADING RESULTS

Carat Weight 2.02 CARATS

Color Grade E

Clarity Grade VVS 2

September 16, 2024
IGI Report Number LG652440879
Description LABORATORY GROWN DIAMOND
Shape and Cutting Style EMERALD CUT
Measurements 8.60 X 5.99 X 3.98 MM

GRADING RESULTS

Carat Weight 2.02 CARATS

Color Grade E

Clarity Grade VVS 2

ADDITIONAL GRADING INFORMATION

Polish EXCELLENT

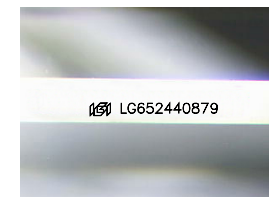
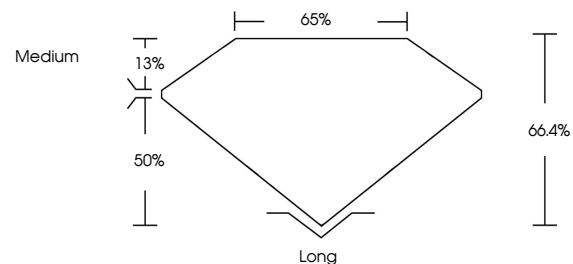
Symmetry EXCELLENT

Fluorescence NONE

Inscription(s) IGI LG652440879

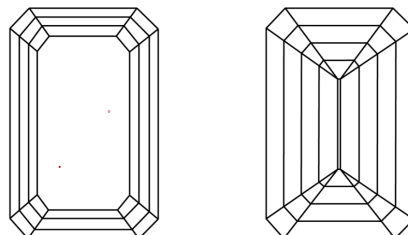
Comments: This Laboratory Grown Diamond was created by Chemical Vapor Deposition (CVD) growth process. Type IIa

PROPORTIONS



Sample Image Used

CLARITY CHARACTERISTICS



KEY TO SYMBOLS

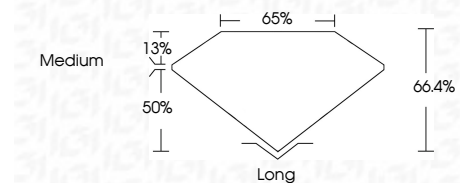
Red symbols indicate internal characteristics. Green symbols indicate external characteristics.

COLOR

D E F G H I J Faint Very Light Light

CLARITY

IF WVS 1-2 VS 1-2 SI 1-2 I 1-3
Internally Flawless Very Very Slightly Included Very Slightly Included Slightly Included Included



ADDITIONAL GRADING INFORMATION

Polish EXCELLENT

Symmetry EXCELLENT

Fluorescence NONE

Inscription(s) IGI LG652440879

Comments: This Laboratory Grown Diamond was created by Chemical Vapor Deposition (CVD) growth process. Type IIa



IGI



September 16, 2024
IGI Report No. LG652440879
EMERALD CUT
2.02 CARATS E
8.60 X 5.99 X 3.98 MM
Color Grade VVS 2
Depth 66.4%
Table 65%
Girdle Medium
Culet Long
Polish EXCELLENT
Symmetry EXCELLENT
Fluorescence NONE
Inscription(s) IGI LG652440879
Comments: This Laboratory Grown Diamond was created by Chemical Vapor Deposition (CVD) growth process. Type IIa