



ELECTRONIC COPY

LG652441079
Report verification at igi.org



September 28, 2024

IGI Report Number **LG652441079**

Description **LABORATORY GROWN DIAMOND**

Shape and Cutting Style **CUT CORNERED
RECTANGULAR MODIFIED
BRILLIANT**

Measurements **11.77 X 8.45 X 5.79 MM**

GRADING RESULTS

Carat Weight **5.06 CARATS**

Color Grade **FANCY DEEP GREEN**

Clarity Grade **VS 1**

LABORATORY GROWN DIAMOND REPORT

September 28, 2024

IGI Report Number **LG652441079**

Description **LABORATORY GROWN DIAMOND**

Shape and Cutting Style **CUT CORNERED RECTANGULAR
MODIFIED BRILLIANT**

Measurements **11.77 X 8.45 X 5.79 MM**

GRADING RESULTS

Carat Weight **5.06 CARATS**

Color Grade **FANCY DEEP GREEN**

Clarity Grade **VS 1**

ADDITIONAL GRADING INFORMATION

Polish **EXCELLENT**

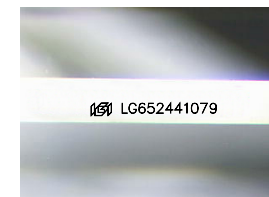
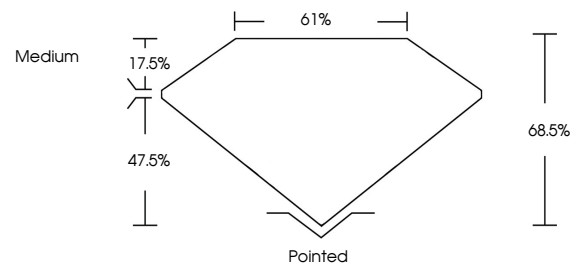
Symmetry **EXCELLENT**

Fluorescence **VERY SLIGHT**

Inscription(s) **IGI LG652441079**

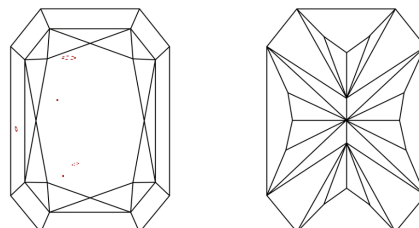
Comments: This Laboratory Grown Diamond was created by Chemical Vapor Deposition (CVD) growth process. Indications of post-growth treatment.

PROPORTIONS



Sample Image Used

CLARITY CHARACTERISTICS



KEY TO SYMBOLS

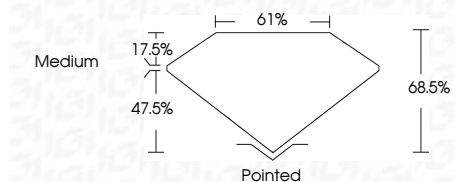
Red symbols indicate internal characteristics.
Green symbols indicate external characteristics.

COLOR

D E F G H I J Faint Very Light Light

CLARITY

IF	VS ¹⁻²	VS ¹⁻²	SI ¹⁻²	I ¹⁻³
Internally Flawless	Very Very Slightly Included	Very Slightly Included	Slightly Included	Included



ADDITIONAL GRADING INFORMATION

Polish **EXCELLENT**

Symmetry **EXCELLENT**

Fluorescence **VERY SLIGHT**

Inscription(s) **IGI LG652441079**

Comments: This Laboratory Grown Diamond was created by Chemical Vapor Deposition (CVD) growth process. Indications of post-growth treatment.



IGI



September 28, 2024	IGI Report No LG652441079	11.77 X 8.45 X 5.79 MM	5.06 CARATS	FANCY DEEP GREEN	VS 1	68.5%	61%	Medium	Pointed	EXCELLENT	EXCELLENT	VERY SLIGHT	IGI LG652441079
CUT CORNERED RECT. MODIFIED BRILLIANT		Color Grade		Clarity Grade	Depth	Table	Graile	Culet	Polish	Symmetry	Fluorescence	Inscription(s)	

Comments: This Laboratory Grown Diamond was created by Chemical Vapor Deposition (CVD) growth process. Indications of post-growth treatment.