



**ELECTRONIC COPY**

**LABORATORY GROWN DIAMOND REPORT**

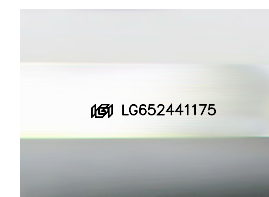
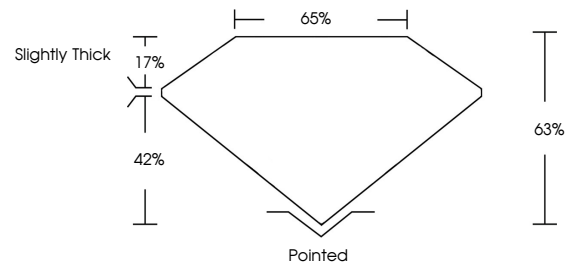
September 27, 2024  
 IGI Report Number **LG652441175**  
 Description **LABORATORY GROWN DIAMOND**  
 Shape and Cutting Style **CUT CORNERED RECTANGULAR MODIFIED BRILLIANT**  
 Measurements **10.55 X 7.86 X 4.95 MM**  
**GRADING RESULTS**  
 Carat Weight **3.69 CARATS**  
 Color Grade **FANCY VIVID GREEN**  
 Clarity Grade **VVS 2**

**ADDITIONAL GRADING INFORMATION**

Polish **EXCELLENT**  
 Symmetry **EXCELLENT**  
 Fluorescence **VERY SLIGHT**  
 Inscription(s) **IGI LG652441175**

Comments: This Laboratory Grown Diamond was created by Chemical Vapor Deposition (CVD) growth process. Indications of post-growth treatment.

**PROPORTIONS**



Sample Image Used

**COLOR**

D E F G H I J Faint Very Light Light

**CLARITY**

IF	VS <sup>1-2</sup>	VS <sup>1-2</sup>	SI <sup>1-2</sup>	I <sup>1-3</sup>
Internally Flawless	Very Very Slightly Included	Very Slightly Included	Slightly Included	Included

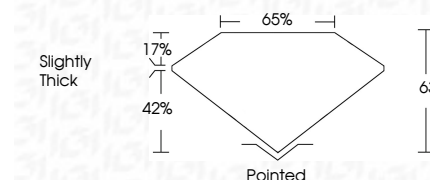


September 27, 2024  
 IGI Report Number **LG652441175**  
 Description **LABORATORY GROWN DIAMOND**  
 Shape and Cutting Style **CUT CORNERED RECTANGULAR MODIFIED BRILLIANT**  
 Measurements **10.55 X 7.86 X 4.95 MM**  
**GRADING RESULTS**  
 Carat Weight **3.69 CARATS**  
 Color Grade **FANCY VIVID GREEN**  
 Clarity Grade **VVS 2**

**ADDITIONAL GRADING INFORMATION**

Polish **EXCELLENT**  
 Symmetry **EXCELLENT**  
 Fluorescence **VERY SLIGHT**  
 Inscription(s) **IGI LG652441175**

Comments: This Laboratory Grown Diamond was created by Chemical Vapor Deposition (CVD) growth process. Indications of post-growth treatment.



**IGI**



September 27, 2024  
 IGI Report No LG652441175  
**CUT CORNERED RECT. MODIFIED BRILLIANT**  
**10.55 X 7.86 X 4.95 MM**  
**3.69 CARATS**  
**FANCY VIVID GREEN**  
**VVS 2**  
**63%**  
**65%**  
 Slightly Thick  
 Pointed  
**EXCELLENT**  
**EXCELLENT**  
**VERY SLIGHT**  
 IGI LG652441175  
 Comments: This Laboratory Grown Diamond was created by Chemical Vapor Deposition (CVD) growth process. Indications of post-growth treatment.