



ELECTRONIC COPY

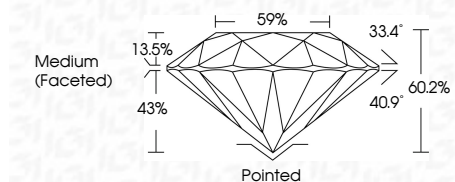
LG652441481
Report verification at igi.org



September 16, 2024
IGI Report Number LG652441481
Description LABORATORY GROWN DIAMOND
Shape and Cutting Style ROUND BRILLIANT
Measurements 8.27 - 8.31 X 4.99 MM

GRADING RESULTS

Carat Weight 2.10 CARATS
Color Grade E
Clarity Grade VVS 2
Cut Grade IDEAL



ADDITIONAL GRADING INFORMATION

Polish EXCELLENT
Symmetry EXCELLENT
Fluorescence NONE
Inscription(s) IGI LG652441481
Comments: This Laboratory Grown Diamond was created by Chemical Vapor Deposition (CVD) growth process. Type IIa



Table with 2 columns: Property and Value. Includes Carat Weight (2.10 CARATS), Color Grade (E), Clarity Grade (VVS 2), Depth (60.2%), and other grading details.

September 16, 2024
IGI Report No LG652441481
ROUND BRILLIANT

2.10 CARATS
E

VVS 2
IDEAL
60.2%
59%

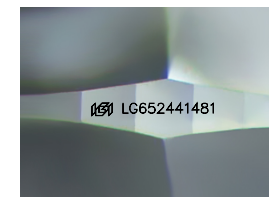
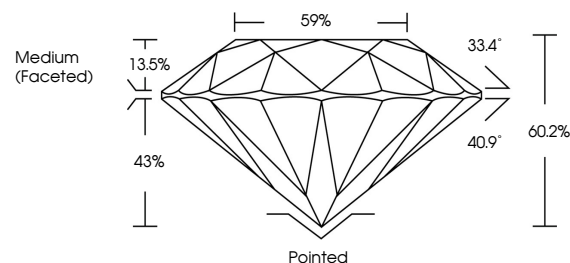
Medium (Faceted)

Pointed
EXCELLENT
EXCELLENT
NONE
IGI LG652441481

Comments: This Laboratory Grown Diamond was created by Chemical Vapor Deposition (CVD) growth process. Type IIa

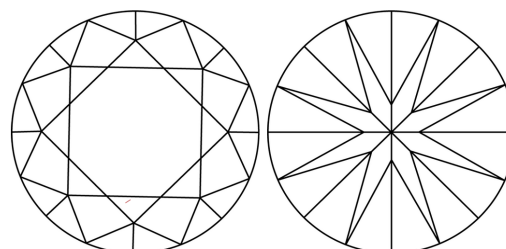
IGI LG652441481

PROPORTIONS



Sample Image Used

CLARITY CHARACTERISTICS



KEY TO SYMBOLS

Red symbols indicate internal characteristics.
Green symbols indicate external characteristics.

COLOR

D E F G H I J Faint Very Light Light

CLARITY

Table with 5 columns: Clarity Grade (IF, VVS 1-2, VS 1-2, SI 1-2, I 1-3) and corresponding descriptions (Internally Flawless, Very Very Slightly Included, Very Slightly Included, Slightly Included, Included).

