



ELECTRONIC COPY

LG652441701
Report verification at igi.org



September 13, 2024

IGI Report Number LG652441701

Description LABORATORY GROWN DIAMOND

Shape and Cutting Style ROUND BRILLIANT

Measurements 8.42 - 8.45 X 5.04 MM

GRADING RESULTS

Carat Weight 2.20 CARATS

Color Grade E

Clarity Grade VVS 2

Cut Grade EXCELLENT

September 13, 2024

IGI Report Number LG652441701

Description LABORATORY GROWN DIAMOND

Shape and Cutting Style ROUND BRILLIANT

Measurements 8.42 - 8.45 X 5.04 MM

GRADING RESULTS

Carat Weight 2.20 CARATS

Color Grade E

Clarity Grade VVS 2

Cut Grade EXCELLENT

ADDITIONAL GRADING INFORMATION

Polish EXCELLENT

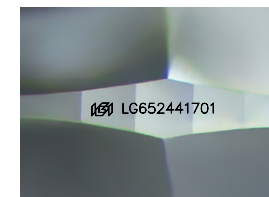
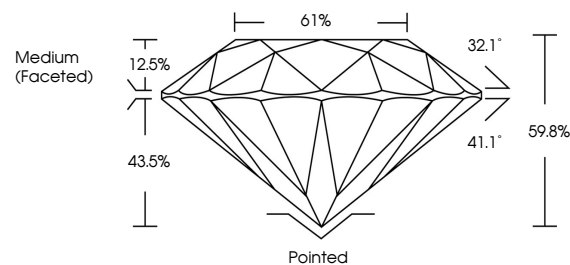
Symmetry EXCELLENT

Fluorescence NONE

Inscription(s) IGI LG652441701

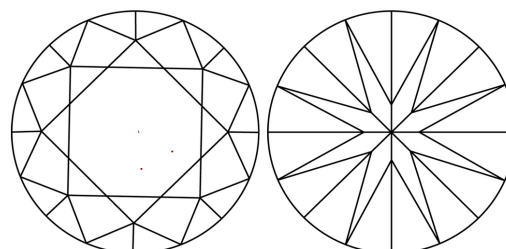
Comments: This Laboratory Grown Diamond was created by Chemical Vapor Deposition (CVD) growth process. Type IIa

PROPORTIONS



Sample Image Used

CLARITY CHARACTERISTICS



KEY TO SYMBOLS

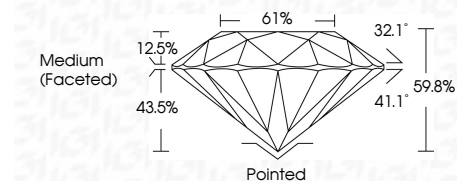
Red symbols indicate internal characteristics. Green symbols indicate external characteristics.

COLOR

D E F G H I J Faint Very Light Light

CLARITY

Table with columns for clarity grades: IF, VVS 1-2, VS 1-2, SI 1-2, I 1-3 and their corresponding descriptions: Internally Flawless, Very Very Slightly Included, Very Slightly Included, Slightly Included, Included



ADDITIONAL GRADING INFORMATION

Polish EXCELLENT

Symmetry EXCELLENT

Fluorescence NONE

Inscription(s) IGI LG652441701

Comments: This Laboratory Grown Diamond was created by Chemical Vapor Deposition (CVD) growth process. Type IIa



IGI



Summary table of diamond characteristics: September 13, 2024, IGI Report No. LG652441701, ROUND BRILLIANT, 8.42 - 8.45 X 5.04 MM, 2.20 CARATS, E, VVS 2, EXCELLENT, 59.8%, 61%, Medium (Faceted), Pointed, EXCELLENT, EXCELLENT, NONE, IGI LG652441701

Comments: This Laboratory Grown Diamond was created by Chemical Vapor Deposition (CVD) growth process. Type IIa