



ELECTRONIC COPY

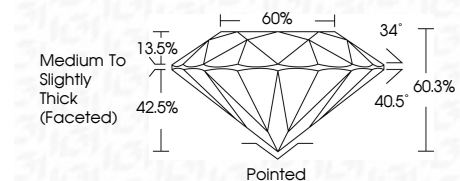
LG652444815
Report verification at igi.org



September 14, 2024
IGI Report Number LG652444815
Description LABORATORY GROWN DIAMOND
Shape and Cutting Style ROUND BRILLIANT
Measurements 8.10 - 8.14 X 4.89 MM

GRADING RESULTS

Carat Weight 2.01 CARATS
Color Grade E
Clarity Grade VS 1
Cut Grade IDEAL

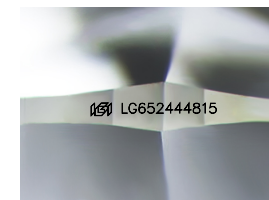


ADDITIONAL GRADING INFORMATION

Polish EXCELLENT
Symmetry EXCELLENT
Fluorescence NONE
Inscription(s) IGI LG652444815
Comments: This Laboratory Grown Diamond was created by Chemical Vapor Deposition (CVD) growth process. Type IIa

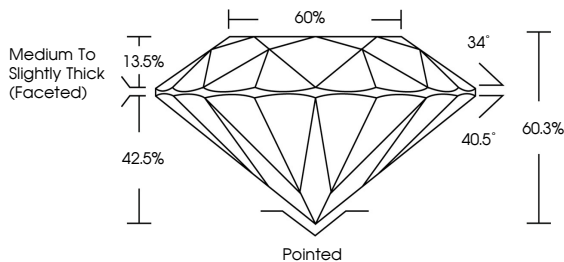


September 14, 2024
IGI Report No LG652444815
ROUND BRILLIANT
8.10 - 8.14 X 4.89 MM
2.01 CARATS E
Color Grade VS 1
Clarity Grade IDEAL
Depth 60.3%
Table 60%
Medium To Slightly Thick (Faceted)
Cutler Pointed
Polish EXCELLENT
Symmetry EXCELLENT
Fluorescence NONE
Inscription(s) IGI LG652444815
Comments: This Laboratory Grown Diamond was created by Chemical Vapor Deposition (CVD) growth process. Type IIa

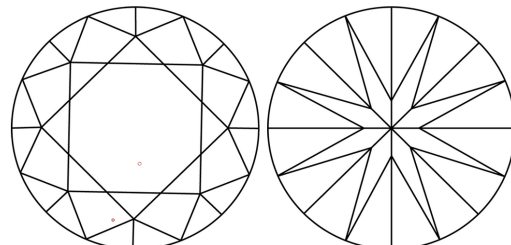


Sample Image Used

PROPORTIONS



CLARITY CHARACTERISTICS



KEY TO SYMBOLS

Red symbols indicate internal characteristics.
Green symbols indicate external characteristics.

COLOR

D E F G H I J Faint Very Light Light

CLARITY

IF VS 1-2 VS 1-2 SI 1-2 I 1-3
Internally Flawless Very Very Slightly Included Very Slightly Included Slightly Included Included

